

- 1 EIFS TAPE & PRIMER
- 2 HYDROFLEX MEMBRANE
- 3 VERTICAL FURRING
- 4 CEMENT BOARD PANEL
- 5 UNITAPE MESH
- 6 ADEX BASECOAT
- 7 STANDARD MESH
- 8 PRIMEX PRIMER
- 9 ADEX FINISH COAT

Description

The adex-**CB** (cement board) finish system is a dual barrier cladding assembly which incorporates an impact resistant, lightweight cement board sheathing. The system is designed around “cavity wall” principles that include furring strips to move the finish system away from the substrate, thereby creating a drainage plane and allowing the convection of air to help manage moisture. An acrylic basecoat, a glass fibre reinforced mesh, mouldings, a primer and a 100% acrylic finish coat are applied to the cement boards. Insulation can also be used (between the furrings) to increase the total R-value of the assembly.

Benefits

- Seals the building envelope and ensures seamless protection of the substrate
- Allows for the drainage of incidental moisture
- Lightweight, durable and flexible
- Architectural design flexibility
- Resists dirt, fading and abrasion
- Rain screen assembly with dual protection against moisture intrusion
- Cement board core resists damage from impact and moisture

Features

- Seamless substrate protection
- Non-combustible basecoat
- Unlimited colour selection
- Vented drainage cavity
- Cement board system

Please refer to adex.ca for the latest version of this document, specifications (PDF + Word), technical drawings, product technical sheets, warranties, maintenance guide...and much more.

This document contains information made available to specialised designers, architects, engineers or other professionals, as a guide only, to help them prepare a technical specification. Specialised designers, architects, engineers or other professionals bear the complete responsibility of evaluating usability, conformity and relevance of the information in view of the particular project and they commit to verify all technical data in the present document in order to assess their suitability in the project. When such use is done by specialised designers, architects, engineers or other professionals, they take full responsibility for the information as if it were their own. Use by a non-specialised person is strongly advised against.

PART 1 GENERAL

1.1 WORK INCLUDED

Provide all labour, materials and equipment necessary to install the rainscreen adex-**CB** exterior system, as evaluated to the CAN/ULC S-101 standard or whose main components were evaluated according to the standard CAN / ULC S-114.

1.2 RELATED SECTIONS

1. Metal framing Section 05 40 00
2. Thermal and Moisture Protection Section 07 27 00

1.3 DESCRIPTION

The adex-**CB** exterior system is a rainscreen system consisting of lightweight cement boards installed over a vented drainage cavity and air/moisture barrier. The cement boards are attached over furring and coated with a non-combustible acrylic base coat. The system includes the following components:

- Air/Moisture barrier;
- Lightweight Cement Board;
- Mechanical fasteners;
- PVC trim mouldings;
- 100% acrylic base coat;
- Glass fibre mesh;
- 100% acrylic finish coat (and primer).

1.4 DESIGN REQUIREMENTS

1. All work undertaken must comply with current codes, norms, construction best practices, as well as the manufacturer's installation instructions;
2. The substrate system shall be engineered to withstand all applicable loads, including live, dead, seismic, positive and negative, etc.
3. On horizontal surfaces, the minimum slope of the system shall be a 6:12 pitch with a maximum length of 250 mm (10").
4. The substrate shall be covered with a waterproof air/moisture membrane,

sealed at all joints, wall openings and penetrations.

5. Cement boards shall never be fastened directly onto studs.
6. The furring system must allow for venting and for drainage towards the exterior.
7. Expansion joints that allow for building movement shall be installed in the following locations:
 - a) At floor levels of all buildings;
 - b) At floor levels where a deflection track is present;
 - c) At control joints in the substrate;
 - d) At expansion joints in the building;
 - e) Where dissimilar materials or substrates meet;
 - f) At inside corners and major openings;
 - g) Anywhere specified on the plans;
 - h) At a maximum distance of 5 m (16 ft), to counter thermal expansion;
 - i) Where deflection higher than L/360 is expected.
8. To ensure compliance with current energy efficiency standards, provide for a thermal break that will be deemed appropriate based on the weight and combustibility requirements:

1.5 QUALITY ASSURANCE

1. System manufacturer shall be ADEX Systems Inc.
2. The applicator shall have a sufficient amount of experience and enough qualified labour at his disposal to install the specified system.
3. The applicator shall follow all professional's directions when installing system components.

1.6 DELIVERY, STORAGE AND HANDLING

1. All materials supplied by ADEX Systems Inc. shall be delivered in their sealed, original packaging with legible labels intact.
2. All materials supplied by ADEX Systems Inc. shall be stored in a cool, dry location at temperatures above 5 °C (41 °F) and protected from weather and other damage.
3. Store materials away from direct sunlight and protect from temperatures in excess of 32 °C (90 °F).
4. Materials suspected of having been frozen or damaged must not be used.
5. Store cement boards on a smooth, horizontal surface.
6. Boards shall be handled according to manufacturer's recommendation in order to prevent damage or loss of performance to the boards.

1.7 JOB CONDITIONS

1. Ambient and substrate temperatures shall be minimum 5 °C (41 °F) during installation.
2. When installing in climatic temperatures below 5 °C (41 °F), tarping, heating and ventilation shall be provided to maintain proper installation temperatures.
3. Ambient temperature shall be maintained above 5 °C (41 °F) for a minimum of 24 hours after installation to ensure that drying is complete.
4. Installation of ADEX materials shall be coordinated with other construction trades.

1.8 ALTERNATIVES

Systems considered equivalent to the adex-**CB** exterior system shall be approved by the architect, in writing, at least ten (10) working days prior to the project bid date.

1.9 WARRANTY

Upon request, the manufacturer shall provide a 10-year limited warranty, stating that materials conform to specifications and are free of manufacturing defects.

PART 2 PRODUCTS

2.1 MANUFACTURER

All components of the system shall be obtained from ADEX Systems Inc. or its authorised distributors. No substitution or addition of other materials is permitted without written consent from the manufacturer.

2.2 PRODUCTS

1. Air/Moisture Barrier:
 - a) Shall be 100% acrylic, such as:
 - i. Vapour permeable membranes:
 - HYDROFLEX STD (vapour permeable), mixed 1:1 by weight with Type GU cement or;
 - HYDROFLEX WO (vapour permeable) or;
 - ii. Vapour barrier membranes:
 - HYDROFLEX-GUARD (not vapour permeable), mixed 1:1 by weight with Type GU cement or;
 - HYDROFLEX VB (not vapour permeable).
 - b) Shall meet UEAct article 3.3.1.1 for water permeability;
 - c) Shall meet ASTM E-283 for air permeability;
 - d) Shall be manufactured by ADEX Systems inc.
2. Metal Furring:
 - a) Metal furring (z-bars) shall be minimum 20-gauge in thickness with flange widths no less than 32 mm (1.25") for fastening of the cement boards;
 - b) Maximum lengths of metal furring shall be used to conform to dimensions indicated on the drawings. Deflection of assembly shall not exceed L/360;
 - c) Metal shall be hot-dip galvanised, conforming to ASTM-A525 (G90).
 - d) To ensure compliance with current energy efficiency standards, provide for a thermal break that will be deemed appropriate based on the weight and combustibility requirements
3. Lightweight Cement Board:
 - a) For compliance with CAN / ULC S-101 system assembly: Shall be PermaBase or PermaBase-Flex from UNIFIX Inc, with dimensions as specified on the drawings, and be made of Portland cement, sand, and expanded polystyrene beads, with a fully embedded alkali-resistant fibreglass mesh facing;
 - b) For compliance with CAN / ULC S-114

components: Shall be Durock Next Gen cement board manufactured by CGC Inc with dimensions as specified on the drawings.

- c) The cement board shall have the following minimum performance characteristics:

1. FREE OF ASBESTOS, GYPSUM, ORGANIC FIBRES OR CELLULOSE:
Yes
2. ENDS AND SIDES SHALL BE CUT SQUARE:
Yes
3. WATER ABSORPTION (ASTM C473):
Less than 15%
4. WEIGHT:
maximum 14.65 kg / m ² (3 lb / ft ²)
5. MILDEW RESISTANCE (ASTM D-3273):
No growth
6. RESISTANCE TO WIND GUSTS (ASTM E330):
144 kg / m ² (30 lb / ft ²)
7. FLAME SPREAD (ASTM E-84):
0
8. SMOKE DEVELOPED (ASTM E-84):
0
9. FASTENER PULL STRENGTH (ASTM D-1037):
849 N (125 lbs)
10. FLEXURAL STRENGTH (ASTM C947):
750 psf
11. COMPRESSION STRENGTH (ASTM D-2394):
less than 1250
12. MINIMUM THICKNESS:
12.7 mm (1/2")

4. Fasteners:
Shall be PermaBase screws from UNIFIX Inc., self-tapping, wafer-head screw with the following minimal requirements:
a) Diameter of head: 10.1 mm (0.40");
b) Without ribs under the screw head;

- c) Underside of head: Flat or with maximum angle of 15°;
d) "NOCOROD" chromate-based anti-corrosion treatment, with 3 mm thick electro-plating;
e) Salt spray resistance (ASTM B117): 500 hours;
f) Sulfur Dioxide (SO₂) resistance (Kesternich test): 5 cycles.
5. PVC Mouldings (if necessary):
Shall meet ASTM D-1784 standards for exterior use.

(See NOVATRIM shapes in ADEX catalogue).

5. Acrylic Base Coat:
a) Shall be a 100% acrylic-based, asbestos-free product, made by ADEX Systems Inc., such as ADEX BASECOAT
b) For compliance with CAN / ULC S-114 components: Shall be ADEX BASECOAT which meets CAN/ULC S-114 standards.
7. Glass Fibre Mesh:
a) Shall be sold by ADEX Systems or by one of its authorised distributors;
b) Shall meet ASTM D-5034 standards;;
c) Shall have different weights according to specific needs:
1. UNITAPE: self-adhesive 75 mm (3") wide
2. ADEX STANDARD MESH: 96 cm (38") wide
8. Primer:
Shall be an acrylic and silica mix that can be applied by roller, such as PRIMEX, manufactured by ADEX Systems Inc.
9. Finish Coat:
a) Shall be factory-mixed, 100% acrylic-based, ready-to-use, containing integral colour and texture;
b) The texture shall be [see ADEX catalogue].

2.3 OTHER MATERIALS

1. Cement:
Shall be lump-free, GU Type cement meeting CSA A3001 standards.
2. Water:
Shall be clean, potable and free of sediment.
3. Waterproof flexible membrane:
Shall be a self-adhesive composite membrane, such as EIFS TAPE;

2.4 TESTS

1. Tests performed by an independent laboratory on the specified materials can be requested.
2. Properties shall meet or exceed the following values when tested by methods listed:

TEST METHOD	
DURABILITY UNDER CLIMATIC CONDITIONS: CCMC TG APPENDICE A2 (60 CYCLES)	No cracking, leaking or bubbling of base coat. No delamination or cracking of finish coat.
ACCELERATED WEATHER RESISTANCE: ASTM G155 (EXPOSED 2000 HOURS)	No deleterious effect.
SALT SPRAY RESISTANCE: ASTM-B117 (EXPOSED 300 HOURS)	No deleterious effect.
MILDEW AND FUNGUS RESISTANCE: CCMC 6.8	No mildew or fungal growth.
WATER PERMEABILITY: CCMC 6.6	≥ 2 hours.
WATER ABSORPTION: CCMC 6.7	≤ 20 %.
WATER VAPOUR TRANSMISSION:ASTM E96-95:	≥ 170 ng/Pa.s.m ² .

Test Method
 Result

PART 3 EXECUTION

IMPORTANT NOTE: Follow the recommendations of the structural engineer and / or architect to ensure proper installation and that it is in compliance with current energy efficiency standards.

3.1 INSPECTION

1. Inspect the substrate to verify that it is structurally sound and solid, ensuring there are not any irregular voids or

projections.

2. Inspect the air/moisture membrane and verify it is continuous and sealed at all junctions and around all wall openings.
3. Inspect all metal flashing to ensure that it is properly installed, making certain that moisture will be deflected to the exterior of the system.
4. The architect and general contractor shall be advised of any discrepancies. Work shall not proceed until unsatisfactory conditions are corrected.

3.2 PREPARATION

1. Protect all adjacent areas and surfaces from damage during the installation of this system.
2. Protect installed materials at the end of each workday to prevent moisture from infiltrating the system.

3.3 MIXING

ADEX BASECOAT:

- a) In a clean container, mix ADEX BASECOAT and GU Type cement at a ratio (by weight) of one-to-one;
- b) Allow mixture to set up for 5 minutes and mix again to break the initial set;
- c) All other additives (such as rapid binder, anti-freeze, accelerator or others) are strictly prohibited.

HYDROFLEX STD:

- a) In a clean container, mix HYDROFLEX STD and GU Type cement at a ratio (by weight) of one-to-one;
- b) Allow mixture to set up for 5 minutes and mix again to break the initial set;
- c) All other additives (such as rapid binder, anti-freeze, accelerator or others) are strictly prohibited.

HYDROFLEX GUARD:

- a) In a clean container, mix AHYDROFLEX GUARD and GU Type cement at a ratio (by weight) of one-to-one;
- b) Allow mixture to set up for 5 minutes and mix again to break the initial set;
- c) All other additives (such as rapid binder, anti-freeze, accelerator or others) are strictly prohibited.

3.4 INSTALLATION

1. Air/Moisture Barrier:
 - a) Ensure flexible membranes are installed, sealing all junctions between the substrate and other materials (openings, wall penetrations, etc.);
 - b) For the HYDROFLEX GUARD membrane:
 - i. STANDARD MESH is embedded into the HYDROFLEX GUARD membrane to help dictate proper thickness as well as treat the sheathing joints.
 - ii. Trowel HYDROFLEX GUARD over the substrate to an approximate thickness of 2mm (5/16").
 - iii. Immediately embed ADEX STANDARD MESH into the wet HYDROFLEX GUARD membrane. Trowel from the centre of the mesh outwards to prevent wrinkles from forming in the mesh. Smooth out the membrane to eliminate trowel lines.
 - iv. The final thickness of the HYDROFLEX GUARD membrane shall be such that the STANDARD MESH is fully embedded and not visible. If mesh is visible, apply an additional skim coat of HYDROFLEX GUARD
 - c) For other membranes :
 - i. Apply a layer of HYDROFLEX membrane over all sheathing joints and immediately embed UNITAPE tape into the membrane;
 - ii. Refer to technical sheet for membrane application
 - d) Allow 24 hours (minimum) to elapse prior to installation of insulation boards over the HYDROFLEX membrane.
2. Furring Strips:
 - a) (By others) Install metal ('Z-bars' or 'omega-shaped') vertically onto the substrate (over the air/moisture membrane);
 - b) Maximum distance between furring shall be 400 mm (16"), 300 mm (12") on soffits and 200 mm (8") when PermaBase Flex is used. When installing, align the furring to ensure a maximum deviation of 3 mm in 2400 mm (1/8" in 8 ft);
 - c) Where expansion joints are to be installed, furring shall be interrupted, providing a minimum space of 12 mm (1/2");
 - d) Provide adequate ventilation and drainage at the bottom of all walls;
 - e) Install bug screens at the bottom of the walls (wrapped around furring strips) as required.
3. Cement Board:
 - a) Do not install wet cement board panels;
 - b) Position boards horizontally, perpendicularly to the furring. The rough surface and tapered edges shall face outwards. Ensure all edges are fully supported by furring and/or studs. Cement boards shall tightly abut adjacent boards, without gaps;
 - c) Avoid locating cement board joints at the corners of wall openings (such as windows and doors);
 - d) Offset vertical cement board joints by a minimum of 300 mm (12") from adjacent panels;
 - e) Ensure each cement board panel or piece of board straddles a minimum of three (3) metal furring strips;
 - f) Install fasteners starting in the middle of the cement board panels and working out, toward the edges;
 - g) Fasten cement boards to furring with appropriate screws spaced every 200 mm (8") and at 150 mm (6") for soffits;
 - h) Screws shall be installed between 10 mm and 15 mm (3/8" and 5/8") from the edge of the cement boards;
 - i) Screw heads shall be flush with the surface of the cement board; they must not damage the fibreglass mesh facing. Ensure that the boards are well attached and that they are in continuous contact with the furring support;
 - j) Install a 50 mm x 50 mm (2" x 2") 20-gauge galvanised steel corner bead at all interior and exterior corners for added support. Corner bead fasteners shall penetrate the cement board but not enter into the substrate;
 - k) Attach NOVATRIMS where required, using stainless steel tacks every 200 mm (8"). Ensure that joints in NOVATRIMS are properly aligned to reduce their visibility;
 - l) Remove from the face of the cement board all labels or foreign materials that could inhibit the adhesion of the base coat to the board surface.
4. Cement Board Joint Treatment:
 - a) Apply self-adhesive UNITAPE over all cement board joints;
 - b) Cover all UNITAPE, screws and NOVATRIM edges with ADEX BASECOAT, making sure that all NOVATRIM flange holes are properly filled;
 - c) Install an additional 300 mm (12") long piece of Starter mesh (at a 45° angle) at the corners of all wall openings;
 - d) Allow 24 hours minimum for drying.

5. Base Coat and Reinforcing Glass Fibre Mesh:

- a) Apply the ADEX BASECOAT mixture over the entire surface of the cement boards to a uniform thickness of 1.6 mm (1/16"). Immediately embed STANDARD mesh into the wet ADEX BASECOAT. The base coat shall be smoothed until the mesh is fully embedded;
- b) The STANDARD mesh shall be lapped a minimum of 63 mm (2 1/2") on all sides;
- c) The STANDARD mesh shall cover all NOVATRIM flanges;
- d) A second coat of ADEX BASECOAT may be required if, after drying, there are imperfections or the mesh is not completely embedded;
- e) A period of 24 hours shall elapse before installing the finish coat.

6. Finish Coat:

- a) With a roller, apply an even coat of PRIMEX primer (same colour as the finish coat) prior to installing the finish coat. The primer shall be touch dry before starting to apply the finish coat;
- b) Trowel-apply a tight coat of ADEX Finish, texture [see ADEX catalogue] to a thickness not greater than the largest aggregate. Apply the finish coat in a continuous fashion, maintaining a wet edge. Levelling and texturing shall take place in one operation to give the finish coat a uniform appearance;
- c) Avoid applications in direct sunlight;
- d) Avoid applying finish coat at locations where caulking will be installed;
- e) Ensure all PVC moulding connections are properly sealed.

3.5 CLEAN-UP

1. Remove waste and left over materials (used in this section) from the job site.
2. Clean all adjacent materials and surfaces, and repair any defects caused to this application or any other work.

3.6 PROTECTION

1. Ensure that the general contractor protects all work against moisture infiltration and other damages by installing the necessary flashing and caulking in a timely manner.
2. Provide protection against dirt, moisture, high humidity, and freezing temperatures until materials are fully dry.

Information in this document contains the current recommendations for the installation of the adex-**cb** system. It is only provided as a guide and is subject to modifications at any time without notice. ADEX Systems Inc. reserves the right to make any modification according to technological progress. Specialised designers, architects, engineers or other professionals that choose to make any use of this information bear the complete responsibility, whatever it be, direct or indirect, that could follow from such use. ADEX Systems Inc. does not bear any responsibility that could give way to damages, defaults, defects, deficiencies, prejudices, loss or decrease of profit, be they direct or indirect, resulting from such use of this information by specialised designers, architects, engineers or other professionals. Please refer to www.adex.ca for the latest version of this document.

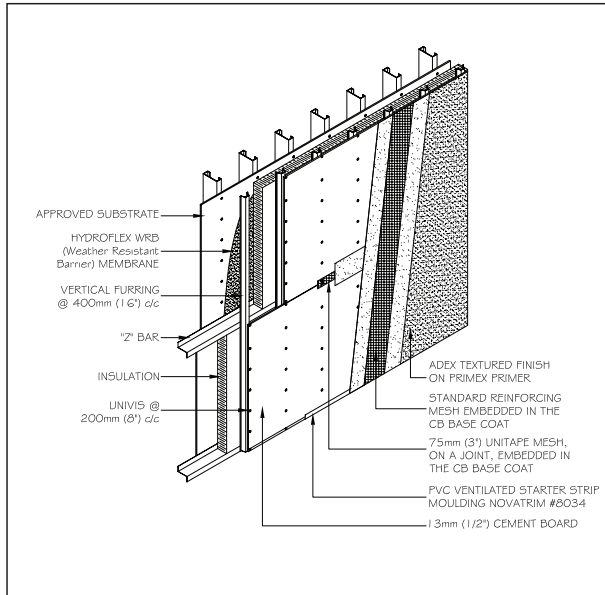
CORPORATE SALES CENTER

7911, Marco Polo
Montreal (Quebec) Canada H1E 1N8
www.adex.ca

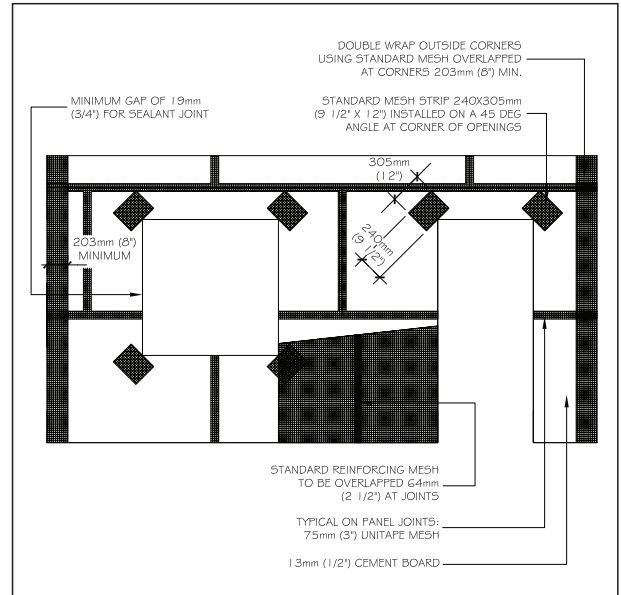
P 514-648-1213 | F 514-648-9597

March 2014

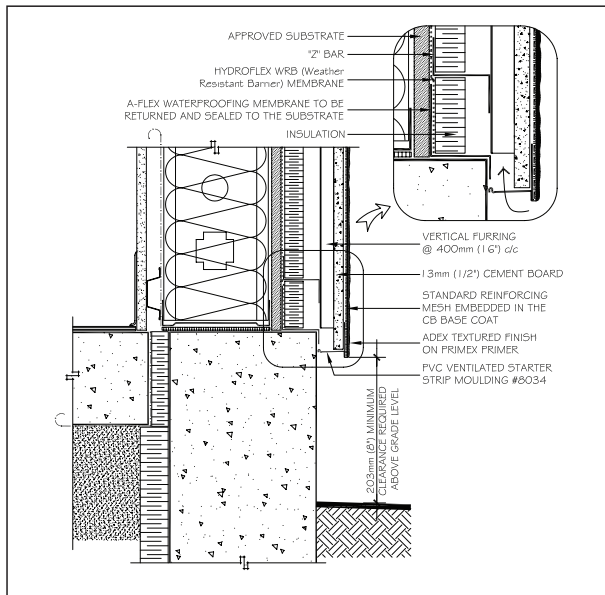




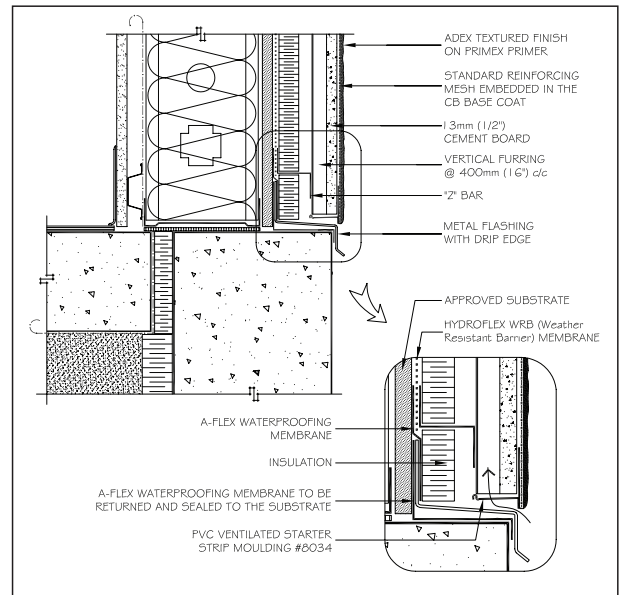
PANEL INSTALLATION



REINFORCING MESH INSTALLATION

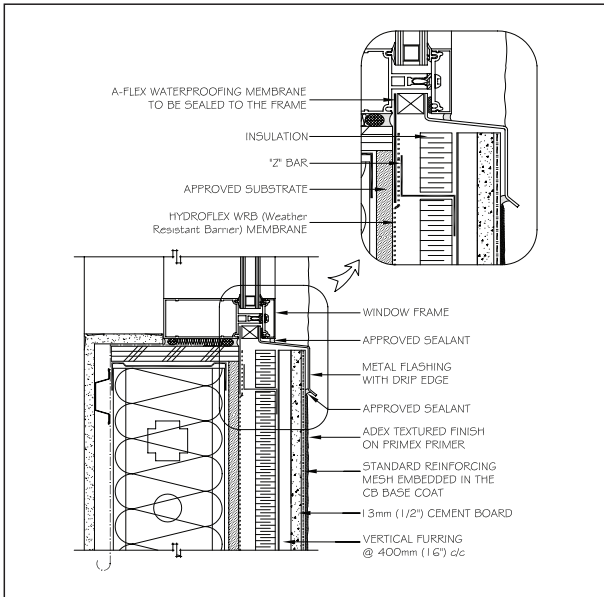


TERMINATION AT GRADE - METHOD A

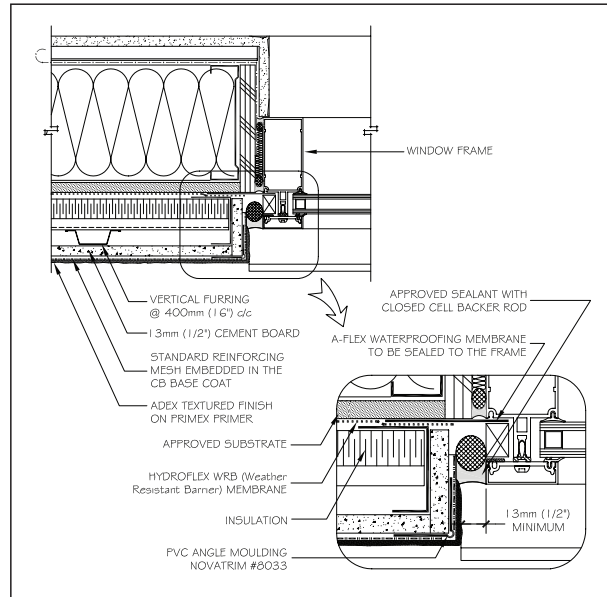


TERMINATION AT GRADE - METHOD B

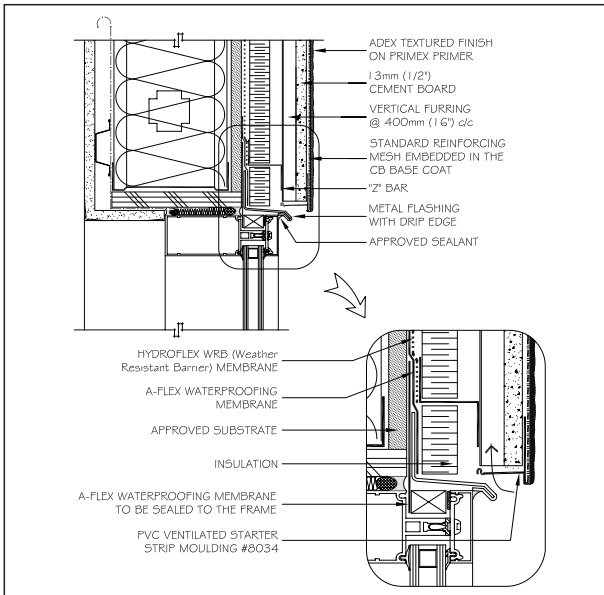
Information in this document contains the current recommendations for the installation of the adex-CB system. It is only provided as a guide and is subject to modifications at any time without notice. ADEX Systems Inc. reserves the right to make any modification according to technological progress. Specialised designers, architects, engineers or other professionals that choose to make any use of this information bear the complete responsibility, whatever it be, direct or indirect, that could follow from such use. ADEX Systems Inc. does not bear any responsibility that could give way to damages, defaults, defects, deficiencies, prejudices, loss or decrease of profit, be they direct or indirect, resulting from such use of this information by specialised designers, architects, engineers or other professionals. Please refer to www.adex.ca for the latest version of this document.



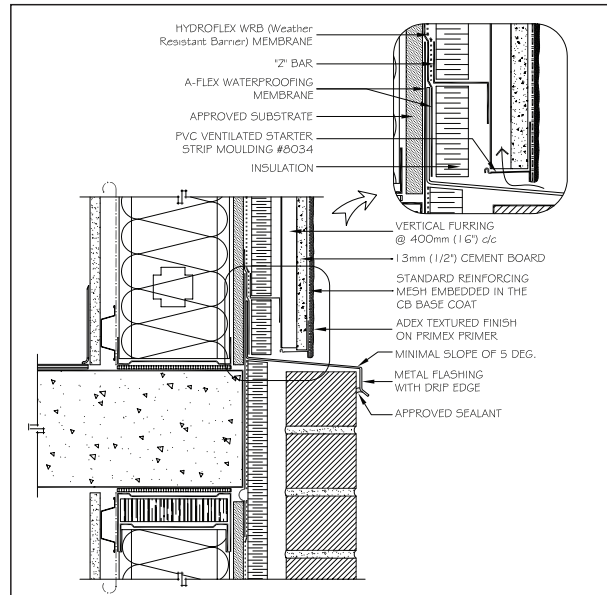
WINDOW SILL



WINDOW JAMB

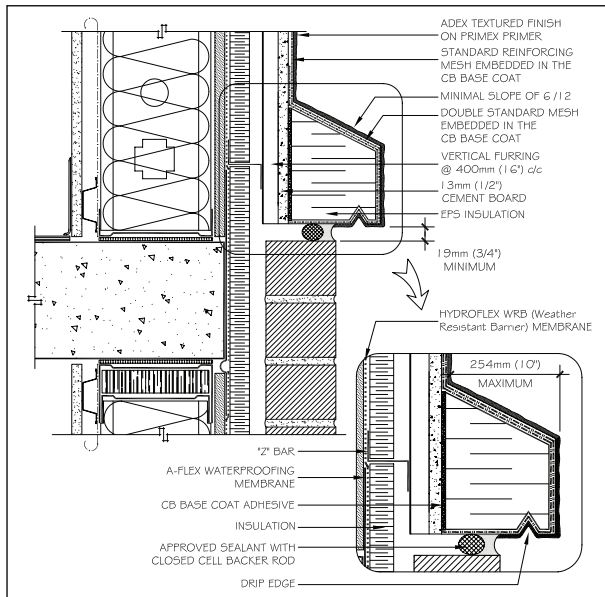


WINDOW HEAD

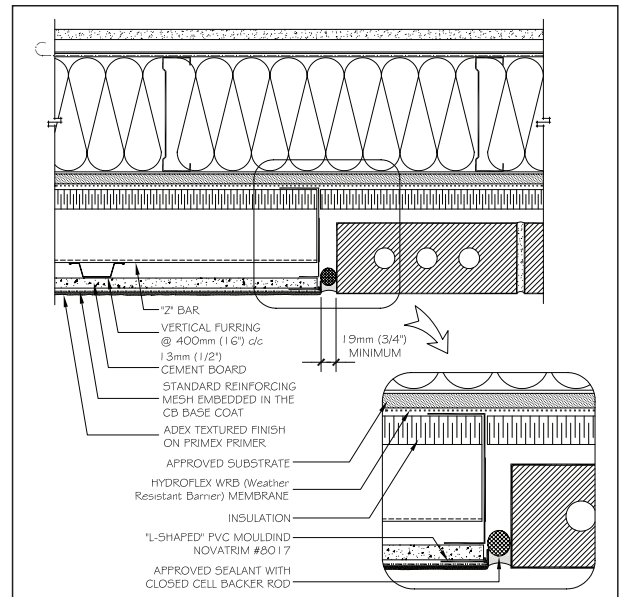


HORIZONTAL JUNCTION

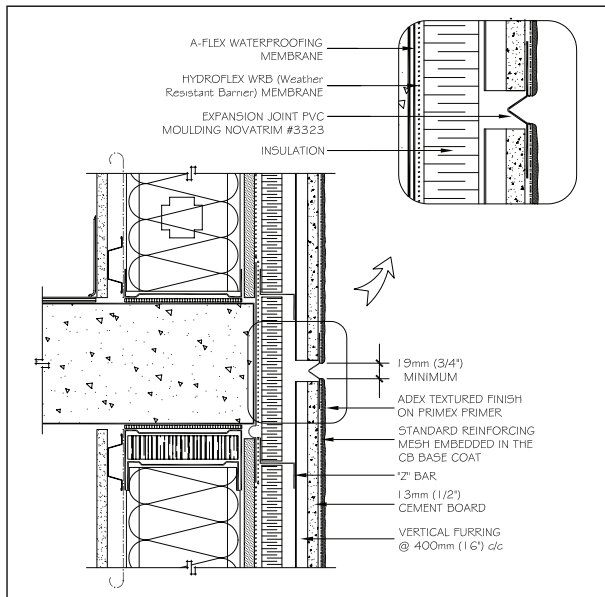
Information in this document contains the current recommendations for the installation of the adex-**CB** system. It is only provided as a guide and is subject to modifications at any time without notice. ADEX Systems Inc. reserves the right to make any modification according to technological progress. Specialised designers, architects, engineers or other professionals that choose to make any use of this information bear the complete responsibility, whatever it be, direct or indirect, that could follow from such use. ADEX Systems Inc. does not bear any responsibility that could give way to damages, defaults, defects, deficiencies, prejudices, loss or decrease of profit, be they direct or indirect, resulting from such use of this information by specialised designers, architects, engineers or other professionals. Please refer to www.adex.ca for the latest version of this document.



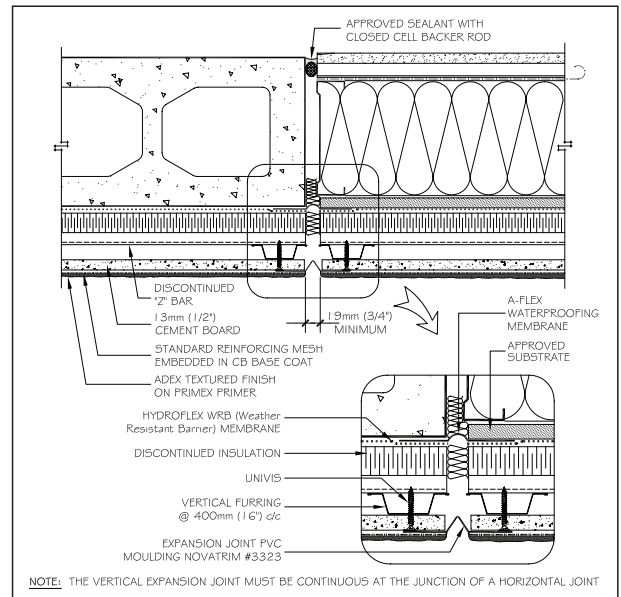
HORIZONTAL JUNCTION (OPTIONAL)



VERTICAL JUNCTION



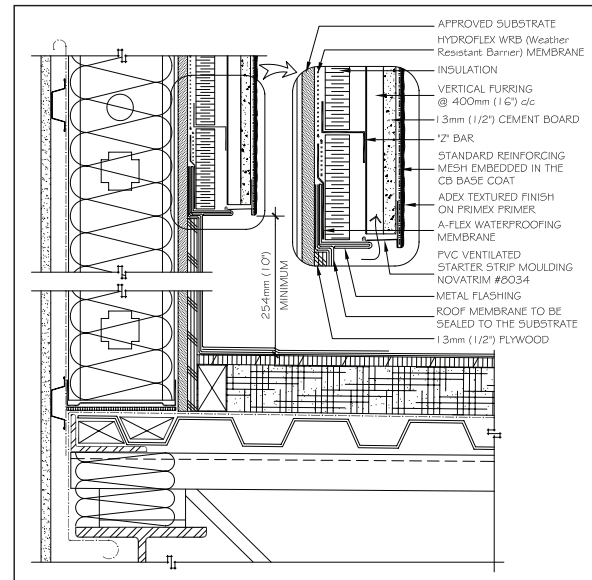
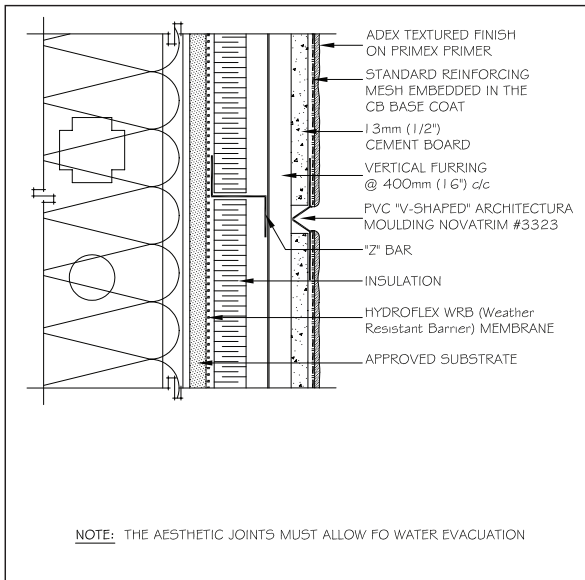
HORIZONTAL CONTROL JOINT



VERTICAL EXPANSION JOINT

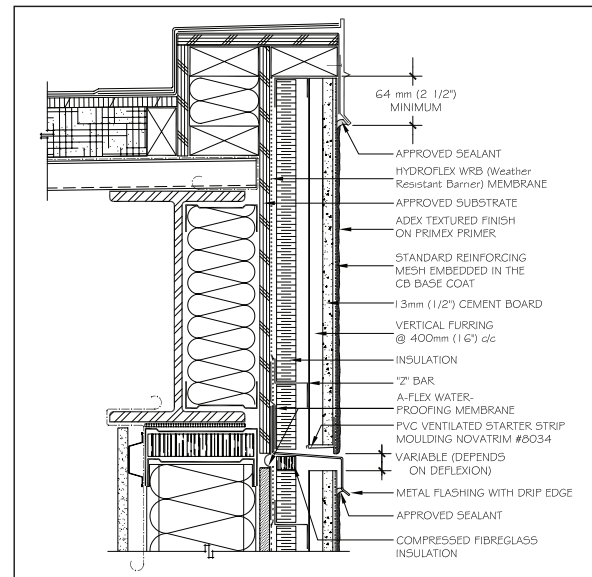
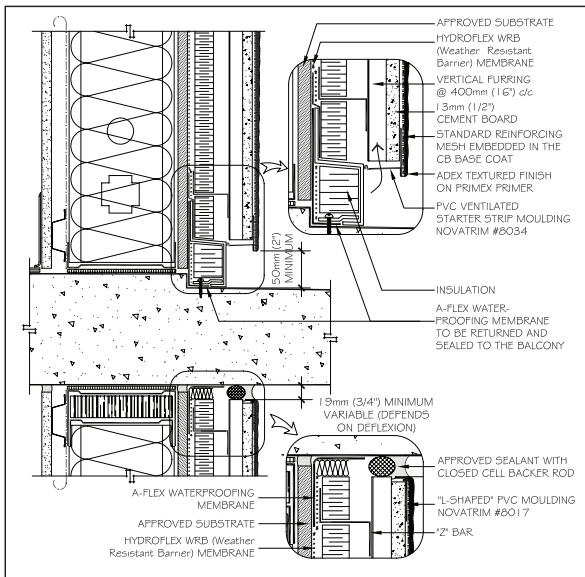
NOTE: THE VERTICAL EXPANSION JOINT MUST BE CONTINUOUS AT THE JUNCTION OF A HORIZONTAL JOINT

Information in this document contains the current recommendations for the installation of the adex-CB system. It is only provided as a guide and is subject to modifications at any time without notice. ADEX Systems Inc. reserves the right to make any modification according to technological progress. Specialised designers, architects, engineers or other professionals that choose to make any use of this information bear the complete responsibility, whatever it be, direct or indirect, that could follow from such use. ADEX Systems Inc. does not bear any responsibility that could give way to damages, defaults, deficiencies, prejudices, loss or decrease of profit, be they direct or indirect, resulting from such use of this information by specialised designers, architects, engineers or other professionals. Please refer to www.adex.ca for the latest version of this document.



AESTHETIC JOINTS

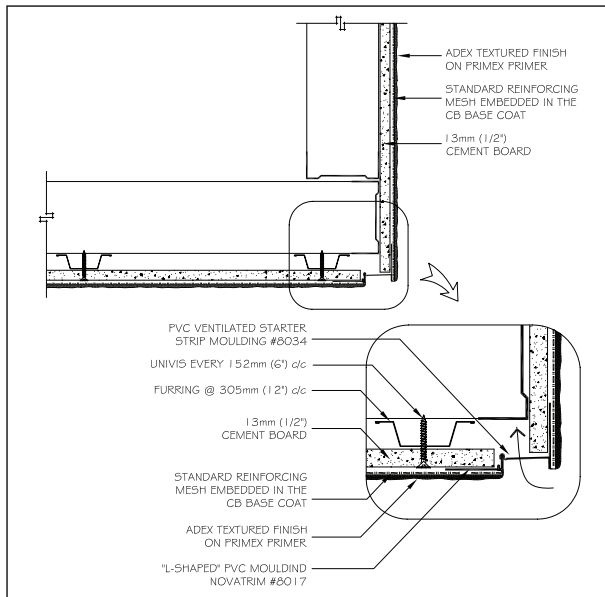
WALL/ROOF JUNCTION



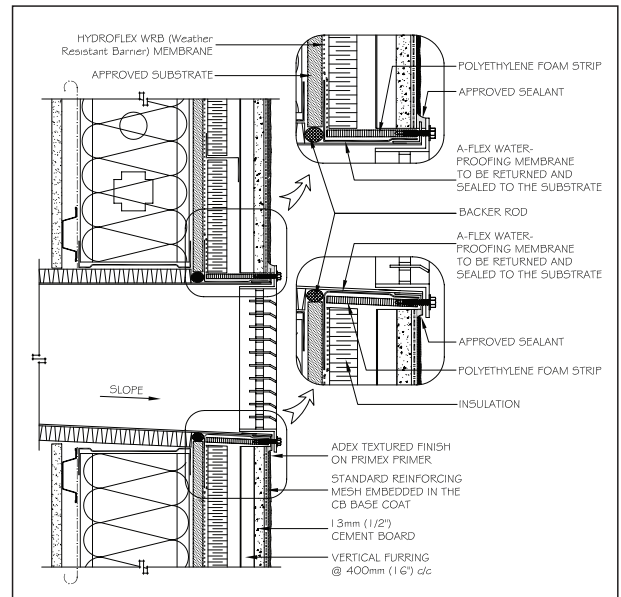
BALCONY JUNCTION

PARAPET

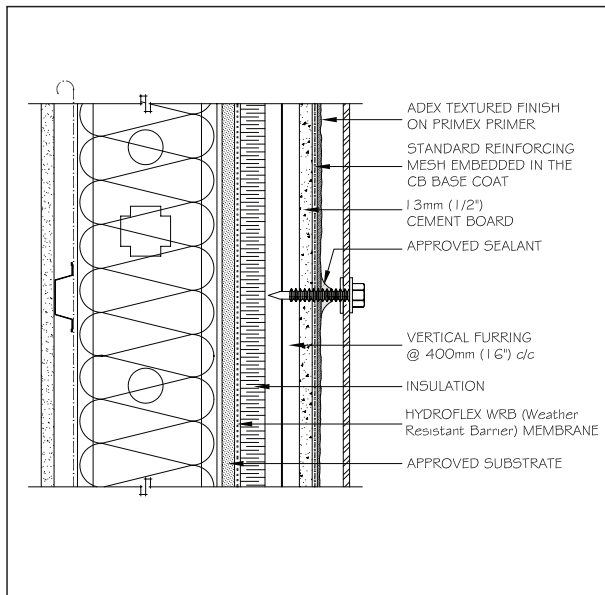
Information in this document contains the current recommendations for the installation of the adex-**CB** system. It is only provided as a guide and is subject to modifications at any time without notice. ADEX Systems Inc. reserves the right to make any modification according to technological progress. Specialised designers, architects, engineers or other professionals that choose to make any use of this information bear the complete responsibility, whatever it be, direct or indirect, that could follow from such use. ADEX Systems Inc. does not bear any responsibility that could give way to damages, defaults, defects, deficiencies, prejudices, loss or decrease of profit, be they direct or indirect, resulting from such use of this information by specialised designers, architects, engineers or other professionals. Please refer to www.adex.ca for the latest version of this document.



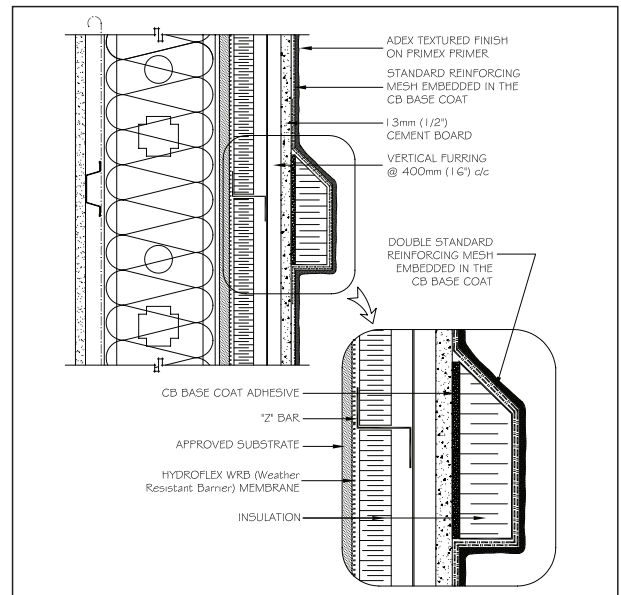
EAVE SOFFIT



WALL PENETRATIONS

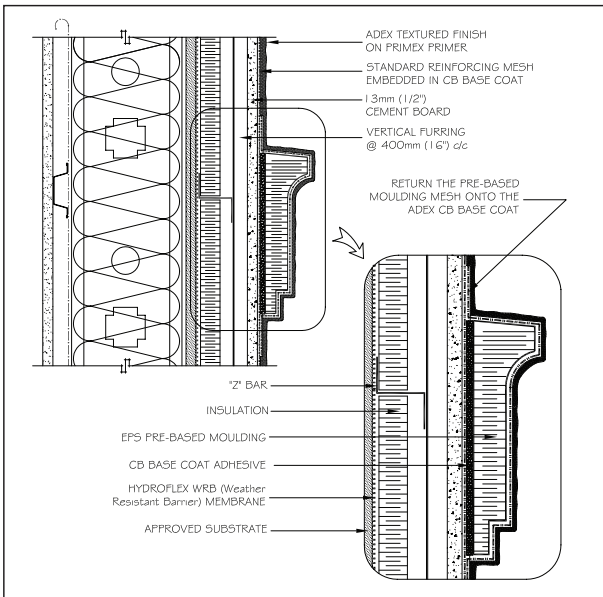


ACCESSORIES ATTACHMENT



DECORATIVE BAND

Information in this document contains the current recommendations for the installation of the adex-CB system. It is only provided as a guide and is subject to modifications at any time without notice. ADEX Systems Inc. reserves the right to make any modification according to technological progress. Specialised designers, architects, engineers or other professionals that choose to make any use of this information bear the complete responsibility, whatever it be, direct or indirect, that could follow from such use. ADEX Systems Inc. does not bear any responsibility that could give way to damages, defaults, defects, deficiencies, prejudices, loss or decrease of profit, be they direct or indirect, resulting from such use of this information by specialised designers, architects, engineers or other professionals. Please refer to www.adex.ca for the latest version of this document.



PRE-BASED MOULDING

Information in this document contains the current recommendations for the installation of the adex-CB system. It is only provided as a guide and is subject to modifications at any time without notice. ADEX Systems Inc. reserves the right to make any modification according to technological progress. Specialised designers, architects, engineers or other professionals that choose to make any use of this information bear the complete responsibility, whatever it be, direct or indirect, that could follow from such use. ADEX Systems Inc. does not bear any responsibility that could give way to damages, defaults, defects, deficiencies, prejudices, loss or decrease of profit, be they direct or indirect, resulting from such use of this information by specialised designers, architects, engineers or other professionals. Please refer to www.adex.ca for the latest version of this document.