

- 1 EIFS TAPE & PRIMER
- 2 HYDROFLEX STD MEMBRANE
- 3 ADEX ADHESIVE / BASE
- 4 EPS-FLAT INSULATION
- 5 ADEX BASECOAT
- 6 STANDARD MESH
- 7 PRIMEX PRIMER
- 8 FINISH COAT

Description

The adex-VCA system is a water-managed exterior insulation and finish system that has been favourably evaluated by CCMC (12913-R) including its use over wood substrates. The system incorporates a secondary weather resistant barrier (WRB), a vertical drainage plan and a flat EPS board.

Benefits

- Provides a monolithic blanket of insulation; reduces energy use
- Seals the building envelope and ensures seamless protection of the substrate
- Allows for the drainage of incidental moisture
- Lightweight, durable and flexible
- Architectural design flexibility
- Resists dirt, fading and abrasion
- Non-combustible rated as per the National Building Code

Features

- EPS-FLAT insulation
- Vertical ribbon fastening and drainage
- Seamless substrate protection
- Non-combustible basecoat
- Dual barrier
- Unlimited colour selection

Please refer to adex.ca for the latest version of this document, specifications (PDF + Word), technical drawings, product technical sheets, warranties, maintenance guide...and much more.

This document contains information made available to specialised designers, architects, engineers or other professionals, as a guide only, to help them prepare a technical specification. Specialised designers, architects, engineers or other professionals bear the complete responsibility of evaluating usability, conformity and relevance of the information in view of the particular project and they commit to verify all technical data in the present document in order to assess their suitability in the project. When such use is done by specialised designers, architects, engineers or other professionals, they take full responsibility for the information as if it were their own. Use by a non-specialised person is strongly advised against.

PART 1 GENERAL

1.1 RELATED SECTIONS

1. Section 01 40 00: Quality Requirements
2. Section 03 30 00: Cast-in-Place Concrete
3. Section 04 20 00: Unit Masonry
4. Section 05 40 00: Cold-Formed Metal Framing
5. Section 06 10 00: Rough Carpentry
6. Section 07 20 00: Thermal Protection
7. Section 07 25 00: Weather Barriers (Vapour / Air Barriers)
8. Section 07 60 00: Flashing and Sheet Metal
9. Section 07 90 00: Joint Protection
10. Section 08 00 00: Openings
11. Section 09 28 00: Backing Boards and Underlayments
12. Section 09 90 00: Painting and Coating

1.2 DESCRIPTION

- 1.2.1 The adex-VCA is an Exterior Insulation and Finish System (EIFS) composed of a continuous water resistive barrier (air and/or vapour barrier) installed over an approved substrate, an EPS board providing an effective thermal insulation, vertical channels of adhesive for drainage and attachment of insulation board, glass fibre reinforcement mesh embedded in a non-combustible acrylic basecoat on the insulation board face, an acrylic primer and finish coat as defined by CAN/ULC S716.1-09.
- 1.2.2 The adex-VCA assembly has been favourably evaluated by the Canadian Construction Materials Centre (CCMC) and bears the evaluation report #12913-R.
- 1.2.3 The adex-VCA system or its major components meet the National Building Code non-combustibility requirements of Articles 3.1.5.5, 3.2.3.7 and 3.2.3.8 for commercial and high rise construction projects due to the favourable evaluation reports listed below:
 - 1.2.3.1 CAN/ULC S134: Fire Test of Exterior Wall Assemblies;
 - 1.2.3.2 1.2.3.2CAN/ULC S114: Method for Determination of Non-Combustibility;
 - 1.2.3.3 CAN/ULC S101: Fire Endurance Tests of Building Construction and Materials.

- 1.2.4 The adex-VCA system is in full compliance with CAN/ULC-S716.1 "Exterior Insulation and Finish Systems (EIFS) - Materials and Systems".

1.3 REFERENCE STANDARDS

- 1.3.1 ASTM International
 - 1.3.1.1 ASTM B117: Standard Practice for Operating Salt Spray (Fog) Apparatus;
 - 1.3.1.2 ASTM C203: Standard Test Methods for Breaking Load and Flexural Properties of Block-Type Thermal Insulation;
 - 1.3.1.3 ASTM C518: Standard Test Method for Steady-State Thermal Transmission Properties by Means of the Heat Flow Meter Apparatus;
 - 1.3.1.4 ASTM C666: Standard Test Method for Resistance of Concrete to Rapid Freezing and Thawing;
 - 1.3.1.5 ASTM D522: Standard Test Methods for Mandrel Bend Test of Attached Organic Coatings;
 - 1.3.1.6 ASTM D523: Standard Test Method for Specular Gloss;
 - 1.3.1.7 ASTM D570: Standard Test Method for Water Absorption of Plastics;
 - 1.3.1.8 ASTM D822: Standard Practice for Filtered Open-Flame Carbon-Arc Exposures of Paint and Related Coatings;
 - 1.3.1.9 ASTM D1621: Standard Test Method for Compressive Properties Of Rigid Cellular Plastics;
 - 1.3.1.10 ASTM D1623: Standard Test Method for Tensile and Tensile Adhesion Properties of Rigid Cellular Plastics;
 - 1.3.1.11 ASTM D1784: Standard Specification for Rigid Poly(Vinyl Chloride) (PVC) Compounds and Chlorinated Poly(Vinyl Chloride) (CPVC) Compounds;
 - 1.3.1.12 ASTM D2126: Standard Test Method for Response of Rigid Cellular Plastics to Thermal and Humid Aging;
 - 1.3.1.13 ASTM D2370: Standard Test Method for Tensile Properties of

- Organic Coatings;
- 1.3.1.14 ASTM D2523: Standard Practice for Testing Load-Strain Properties of Roofing Membranes;
 - 1.3.1.15 ASTM D2842: Standard Test Method for Water Absorption of Rigid Cellular Plastics;
 - 1.3.1.16 ASTM D4541: Standard Test Method for Pull-Off Strength of Coatings Using Portable Adhesion Testers;
 - 1.3.1.17 ASTM D5034: Standard Test Method for Breaking Strength and Elongation of Textile Fabrics (Grab Test);
 - 1.3.1.18 ASTM D5420: Standard Test Method for Impact Resistance of Flat, Rigid Plastic Specimen by Means of a Striker Impacted by a Falling Weight (Gardner Impact);
 - 1.3.1.19 ASTM E96: Standard Test Methods for Water Vapor Transmission of Materials;
 - 1.3.1.20 ASTM E283: Standard Test Method for Determining Rate of Air Leakage Through Exterior Windows, Curtain Walls, and Doors Under Specified Pressure Differences Across the Specimen;
 - 1.3.1.21 ASTM E330: Standard Test Method for Structural Performance of Exterior Windows, Doors, Skylights and Curtain Walls by Uniform Static Air Pressure Difference;
 - 1.3.1.22 ASTM E331: Standard Test Method for Water Penetration of Exterior Windows, Skylights, Doors, and Curtain Walls by Uniform Static Air Pressure Difference;
 - 1.3.1.23 ASTM E1131: Standard Test Method for Compositional Analysis by Thermogravimetry;
 - 1.3.1.24 ASTM E1252: Standard Practice for General Techniques for Obtaining Infrared Spectra for Qualitative Analysis;
 - 1.3.1.25 ASTM E2098: Standard Test Method for Determining Tensile Breaking Strength of Glass Fiber Reinforcing Mesh for Use in Class PB Exterior Insulation and Finish Systems (EIFS), after Exposure to a Sodium Hydroxide Solution;
 - 1.3.1.26 ASTM G 155: Standard Practice for Operating-Xenon Arc Light Apparatus, for Exposure of Non-metallic Materials.
- 1.3.2 CSA International
 - 1.3.2.1 CAN/CSA A3000: Cementitious materials compendium (Consists of A3001, A3002, A3003, A3004 and A3005).
 - 1.3.3 National Research Council of Canada

- (NRC)
 - 1.3.3.1 Canadian Construction Materials Centre (CCMC): Technical Guide for EIFS.
- 1.3.4 Underwriters' Laboratories of Canada (ULC)
 - 1.3.4.1 1CAN/ULC S101: Fire Endurance Tests of Building Construction and Materials;
 - 1.3.4.2 CAN/ULC S102: Surface Burning Characteristics of Building Materials and Assemblies;
 - 1.3.4.3 CAN/ULC S114: Method for Determination of Non-Combustibility;
 - 1.3.4.4 CAN/ULC S134: Fire Test of Exterior Wall Assemblies;
 - 1.3.4.5 CAN/ULC S701: Standard for Thermal Insulation, Polystyrene, Boards and Pipe Covering;
 - 1.3.4.6 CAN/ULC S716.1: Standard for Exterior Insulation and Finish Systems (EIFS) - Materials and Systems;
 - 1.3.4.7 CAN/ULC S716.2: Standard for Exterior Insulation and Finish Systems (EIFS) - Installation of EIFS components and Water Resistive Barrier;
 - 1.3.4.8 CAN/ULC S716.3: Standard for Exterior Insulation and Finish Systems (EIFS) - Design Application.

1.4 DESIGN REQUIREMENTS

- 1.4.1 All work must comply with CCMC requirements as outlined in its evaluation report #12913-R.
- 1.4.2 All work undertaken must comply with the current codes and norms, best practice guides, as well as the manufacturer's installation instructions.
- 1.4.3 The substrate shall be engineered to withstand all applicable loads, including live, dead, seismic, suction, etc..
- 1.4.4 On horizontal surfaces, the minimum slope of the system shall be a 6:12 pitch with a maximum length of 250mm (10").
- 1.4.5 The substrate shall be protected with a waterproofing membrane sealed at all joints and openings.
- 1.4.6 The substrate shall be one of the following:
 - a) Brick, masonry or concrete;
 - b) Fibre cement board;
 - c) Glass-mat faced gypsum board;
 - d) Plywood or OSB board. (Not approved for systems meeting CAN/ULC-S134 and S101.)
- 1.4.7 Expansion joints that allow for natural building movement shall be installed in the following locations:
 - 1.4.7.1 At expansion joints that occur in the substrate;
 - 1.4.7.2 At any abutment of the system

- with other materials;
- 1.4.7.3 Where the substrate changes;
- 1.4.7.4 Where significant structural movement occurs;
- 1.4.7.5 At a maximal distance of 10m (30ft), to counter thermal expansion;
- 1.4.7.6 Where deflections that might be in excess of L/240 are expected;
- 1.4.7.7 At the floor line in wood frame construction (may not be required when using engineered wood beams.
- 1.4.8 Expansion joints, or fire-breaks, shall extend through the EIFS and shall include proper flashing attached to the substrate (horizontal joints).

1.5 QUALITY ASSURANCE

- 1.5.1 Manufacturers
 - 1.5.1.1 EIFS manufacturer shall be Adex Systems Inc.
 - 1.5.1.2 Be a member of and in good standing with the EIFS Council of Canada.
 - 1.5.1.3 All other third-party material manufacturers shall be recognized by Adex Systems Inc.
- 1.5.2 Applicators
 - 1.5.2.1 Applicators shall have the necessary permits.
 - 1.5.2.2 Applicator shall have a minimum of (2) two-years of experience in applying EIF systems and employ sufficient, knowledgeable personnel to complete work on schedule.
 - 1.5.2.3 Applicator shall follow all EIFS manufacturer's directions when installing system components.

1.6 DELIVERY & STORAGE

- 1.6.1 Deliver materials to the job site in their original unopened packages, clearly marked with the manufacturer's name, and description of contents.
- 1.6.2 Store in a clean, dry, well-ventilated area at a temperature not less than 5°C (41°F).
- 1.6.3 Protect materials from the elements of weather, and keep away from excessive heat (temperatures above 32°C (90°F)).

1.7 ARCHITECTURAL SAMPLES

- 1.7.1 Upon request, Adex or its distributor will provide a minimum 200mm x 200mm (8"x8") sample for colour and texture approval.
- 1.7.2 Do not start any final work until the Consultant gives final approval of sample(s).

1.8 JOB MOCK-UP

- 1.8.1 Construct a mock-up panel on site as part of the actual wall on an area as indicated by the Consultant. The approved mock-up panel shall form a standard for the project and no work of inferior quality will be accepted. The mock-up shall match sample panel(s) submitted to the Consultant as described in paragraph 1.7 of this Section.

1.9 JOB CONDITIONS

- 1.9.1 Ambient and surface temperatures shall be minimum 5°C (41°F) during installation.
- 1.9.2 When installing in climatic temperatures below 5°C (41°F), tarping, heating and ventilation shall be provided to maintain proper installation temperatures.
- 1.9.3 Ambient temperature shall be maintained above 5°C (41°F) for a minimum of 24 hours after installation to ensure that drying is complete. Allow for extended drying times in cool, higher humidity conditions.
- 1.9.4 Installation of Adex materials shall be co-ordinated with other construction trades.

1.10 ALTERNATIVES

- 1.10.1 Systems considered equivalent to adex-VCA shall be evaluated by CCMC according to Master Format #07 24 13.01, and shall be approved by the architect, in writing, at least ten (10) working days prior to the project bid date.

1.11 WARRANTY

- 1.11.1 Upon request, the manufacturer shall provide a (5) five-year limited warranty, stating that materials conform to specifications and are free of manufacturing defects.

PART 2 PRODUCTS

2.1 MANUFACTURER

2.1.1 All components of the adex-VCA system shall be obtained from Adex Systems Inc. or its authorised distributors. No substitution or addition of other material is permitted without written consent from the manufacturer.

2.2 PRODUCTS

2.2.1 Weather Resistant Barrier

2.2.1.1 Shall be 100% acrylic, such as

a) Vapour permeable membranes:

- HYDROFLEX STD mixed 1:1 by weight with Type GU cement or;
- HYDROFLEX WO or;
- HYDROFLEX AD.

b) Vapour barrier membranes:

- HYDROFLEX-GUARD, mixed 1:1 by weight with Type GU cement or;
- HYDROFLEX VB.

2.2.1.2 Shall meet UEAct article 3.3.1.1 for water permeability;

2.2.1.3 Shall meet ASTM E-283 for air permeability;

2.2.1.4 Shall be supplied by Adex Systems Inc.

Design and location of all air and vapour barriers is the responsibility of the Design Professional.

2.2.2 Adhesive

2.2.2.1 Shall be a 100%-acrylic polymer based material.

2.2.2.2 ADEX BASECOAT mixed with an approximately equal weight of Type GU Portland cement (weight ratio is 1:1).

2.2.2.3 Adhesive shall be applied in vertical ribbons using a 3/8"x1/2"x1-1/2" U-notched trowel (typical).

2.2.3 Insulation Board

2.2.3.1 ADEX EPS-FLAT INSULATION made by a manufacturer approved by Adex Systems Inc. Please contact your Adex representative to select the appropriate EPS Board design.

2.2.3.2 Shall conform to CAN-ULC S701-01, Type 1 and be made from virgin material with a nominal density of 16 Kg/m³ (1 Lb/ft³).

2.2.3.3 ADEX EPS-FLAT INSULATION thickness shall range between 38mm and 125mm (1.5" and 5") and maximum board size shall be 600mm x 1200mm (24" x 48").

2.2.3.4 Shall be sold by Adex Systems Inc. or by one of its authorised distributors.

2.2.4 Basecoat

2.2.4.1 Shall be a 100% acrylic-based,

asbestos-free product, manufactured by Adex Systems Inc. such as Adex Basecoat.

2.2.4.2 Adex Basecoat mixed with an approximately equal weight of Type GU Portland cement (Weight ratio = 1:1).

2.2.4.3 Shall conform the norm: CAN/ULC S114: Method for Determination of Non-Combustibility;

2.2.5 Reinforcing Fibreglass Mesh

2.2.5.1 Shall be purchased from Adex Systems Inc. or from one of its authorised distributors.

2.2.5.2 Shall meet ASTM D-5034 standards.

2.2.5.3 Shall have different weights according to specific needs:

a) QUICK TAPE MESH:

65g/m² (2 oz/yd²)

b) STARTER MESH:

150g/m² (4.5 oz/yd²)

c) STANDARD MESH (DESIGN):

150g/m² (4.5 oz/yd²)

d) STANDARD MESH PLUS:

190g/m² (6 oz/yd²)

e) INTERMEDIATE MESH:

375g/m² (11 oz/yd²)

f) ARMOUR MESH: 500g/m²

(15 oz/yd²)

g) CORNER MESH:

305g/m² (9 oz/yd²)

2.2.6 Primer

2.2.6.1 Shall be a tinted, acrylic-based, roll-on priming agent, such as PRIMEX PRIMER, manufactured by Adex Systems Inc. PRIMEX PRIMER is not mandatory but highly recommended as it will enhance the depth of colour, increase the yield of finish coat, and enhance the longevity of the finish coat.

2.2.7 Finish Coat

2.2.7.1 Shall be a factory-mixed, 100% acrylic-based Adex Finish Coat, containing integral colour and texture.

2.2.7.2 The texture shall be [See the Adex Specification Binder or visit www.adex.ca to view the various textures].

2.3 OTHER MATERIALS

2.3.1 Portland Cement

2.3.1.1 Shall be lump-free, Type GU (Type 10) Portland cement conforming to CSA-A3001 standards.

2.3.2 Water

2.3.2.1 Shall be clean, potable, and free of sediment.

2.3.3 Mechanical Fasteners

2.3.3.1 Shall be ADEXLOC for usage with steel studs or wood substrate. Screws must be galvanized or have an

approved coating with tips designed to fasten to steel studs or wood studs.

2.3.3.2 Shall be ADEXTEC for usage with substrate such as concrete or masonry.

2.3.4 Transition Membrane

2.3.4.1 Shall be a flexible, self-adhesive composite material tested for adhesion to itself and to Adex components. Suitable material includes Adex EIFS TAPE (4"-12" rolls) used with the appropriate primer or the A-FLEX SEALANT AND MESH. All other materials must be approved by Adex Systems Inc.

2.3.5 PVC trims (if necessary):

2.3.5.1 Shall meet ASTM-D1784 standards for exterior use.

2.3.6 Backer Rod & Sealant

2.3.6.1 Refer to Section 07 90 00.

2.3.6.2 Backer rod must be closed pore type.

2.3.6.3 Use only low-modulus caulking with long service lives. Products should meet ASTM C1481 - 12 Standard Guide for Use of Joint Sealants with Exterior Insulation and Finish Systems (EIFS).

2.4 TESTS

2.4.1 Tests performed by an independent laboratory on the specified materials can be requested.

2.4.1.1 Properties shall meet or exceed the following values when tested by the methods listed:

TEST METHOD

DURABILITY UNDER CLIMATIC CONDITIONS:
CCMC TG APPENDICE A2 (60 CYCLES)

No cracking, leaking or bubbling of base coat.
No delamination or cracking of finish coat.

ACCELERATED WEATHER RESISTANCE:
ASTM G155 (EXPOSED 2000 HOURS)

No deleterious effect.

SALT SPRAY RESISTANCE:
ASTM-B117 (EXPOSED 300 HOURS)

No deleterious effect.

MILDEW AND FUNGUS RESISTANCE:
CCMC 6.8

No mildew or fungal growth.

WATER PERMEABILITY:
CCMC 6.6

≥ 2 hours.

WATER ABSORPTION:
CCMC 6.7

≤ 20 %.

BOND TEST:
CCMC 6.4

After 2 hours drying: ≥ 100 kPa. After 7 days drying: ≥ 300 kPa.

BOND TEST:
CCMC 6.5 (LAMINA)

After 2 hours drying: ≥ 100 kPa. After 7 days drying: ≥ 300 kPa.

WATER VAPOUR TRANSMISSION:ASTM E96-95:

≥ 170 ng/Pa.s.m².

IMPACT RESISTANCE:
ASTM E5420

Pass

WIND LOAD RESISTANCE:
ASTM E330

Pass

**FIRE TEST OF EXTERIOR WALL ASSEMBLIES
CAN/ULC-S134:**

≥ Pass

**FIRE ENDURANCE TESTS OF BUILDING
CONSTRUCTION AND MATERIALS:
CAN/ULC-S101:**

≥ The adex-**VCA** systems assembly, with 5 inch insulation boards, stayed in place for the 15 minute fire test.

■ Test Method
■ Result

PART 3 EXECUTION

3.1 INSPECTION

- 3.1.1 Inspect the substrate to verify that it is structurally sound and solid, ensuring there are no irregular voids or projections.
- 3.1.2 Inspect all metal flashing to ensure that they are properly installed, making certain that moisture will be deflected to the exterior of the system.
- 3.1.3 The architect and general contractor shall be advised of any discrepancies. Work shall not proceed until unsatisfactory conditions are corrected.

3.2 PREPARATION

- 3.2.1 Ensure conduit pipes, cables and outlets are adequately covered before commencing with installation.
- 3.2.2 Adjacent finish work (such as brick, siding, concrete, etc.) must be protected from damage during the installation of Adex materials.

3.3 MIXING

- 3.3.1 HYDROFLEX STD membrane
 - 3.3.1.1 Mix the contents of the HYDROFLEX pail until thoroughly blended. This will remove any settling of the contents due to storage.
 - 3.3.1.2 In a clean container, mix HYDROFLEX and Type GU Portland cement at a ratio (by weight) of one-to-one. Add Portland cement in small increments to prevent lumps from occurring.
 - 3.3.1.3 Allow mixture to set up for 5 minutes and mix again to break the initial set.
 - 3.3.1.4 Small amounts of water may be

added to adjust the consistency. All other additives (such as rapid binder, anti-freeze, accelerator or others) are strictly prohibited.

- 3.3.2 HYDROFLEX GUARD membrane
 - 3.3.2.1 Mix the contents of the HYDROFLEX pail until thoroughly blended. This will remove any settling of the contents due to storage.
 - 3.3.2.2 In a clean container, mix HYDROFLEX and Type GU Portland cement at a ratio (by weight) of one-to-one. Add Portland cement in small increments to prevent lumps from occurring.
 - 3.3.2.3 Allow mixture to set up for 5 minutes and mix again to break the initial set.
 - 3.3.2.4 Small amounts of water may be added to adjust the consistency. All other additives (such as rapid binder, anti-freeze, accelerator or others) are strictly prohibited.
- 3.3.3 ADEX BASECOAT basecoat/adhesive
 - 3.3.3.1 Mix the contents of the Adex BASECOAT pail until thoroughly blended. This will remove any settling of the contents due to storage.
 - 3.3.3.2 In a clean container, combine Adex BASECOAT with fresh, lump-free Type GU Portland cement at a ratio of 1:1 by weight. Thoroughly mix to a homogenous state using a paddle mixer and electric drill. Add Portland cement in small increments to prevent lumps from occurring.
 - 3.3.3.3 Allow mixture to set up for 5 minutes, then mix again to break the initial set.
 - 3.3.3.4 Small amounts of water may be added to adjust the consistency. All other additives (antifreeze, accelerators, or otherwise) are strictly forbidden.

3.4 INSTALLATION

- 3.4.1 Flashing
 - 3.4.1.1 Refer to Section 07 60 00, Flashing.
 - 3.4.1.2 Ensure flashing is installed where specified on the construction documents. Flashing must be installed at through-wall breaks, at the baseline of walls, and anywhere else the system is to drain to the exterior.
 - 3.4.1.3 Apply EIFS TAPE or A-FLEX SEALANT AND MESH over the flashing leg and apply the trowel-on membrane directly to the membrane surface.
- 3.4.2 Sheathing Joint Treatment
 - 3.4.2.1 Complete sheathing joint treatments as per the Weather

- Resistant Barrier (WRB) data sheets.
- 3.4.3 Weather Resistant Barrier**
- 3.4.3.1** Ensure transition membranes (EIFS TAPE or A-FLEX SEALANT and MESH) are installed, sealing all junctions between the substrate and other materials (wall penetrations, openings, and dissimilar materials).
- 3.4.3.2** The Weather Resistant Barrier (WRB) shall be joined to other components of the system so that the air barrier is continuous in three dimensions.
- 3.4.3.3** Read the Weather Resistant Barrier data sheets for complete installation instructions.
- 3.4.3.4** Two-coat applications are required over oriented strand board (OSB) substrates.
- 3.4.3.5** ADEX HYDROFLEX STD, HYDROFLEX VB, HYDROFLEX AD or ADEX HYDROFLEX WO:
- Ensure flexible membranes are installed, sealing all junctions between the substrate and other materials (openings, wall penetrations, etc.).
 - Apply a layer of HYDROFLEX membrane over all sheathing joints and immediately embed STARTER/DETAIL MESH into the membrane.
 - Apply HYDROFLEX membrane over the entire surface ensuring a minimal thickness of 1.6mm (1/16").
- 3.4.3.6** HYDROFLEX GUARD membrane:
- STANDARD MESH is embedded into the HYDROFLEX GUARD membrane to help dictate proper thickness as well as treat the sheathing joints.
 - Trowel HYDROFLEX GUARD over the substrate to an approximate thickness of 2mm (3/16").
 - Immediately embed the STANDARD MESH into the wet HYDROFLEX GUARD membrane. Trowel from the centre of the mesh outwards to prevent wrinkles from forming in the mesh. Smooth out the membrane to eliminate trowel lines.
 - The final thickness of the HYDROFLEX GUARD membrane shall be such that the STANDARD MESH is fully embedded and not visible. If mesh is visible, apply an additional skim coat of HYDROFLEX GUARD.
- 3.4.3.7** Allow the Weather Resistant Barrier (WRB) to fully cure before adhering insulation boards over the membrane.
- 3.4.4 Stay-In-Place Mechanism**
- 3.4.4.1** At the top of wall sections, STARTER MESH shall be adhered to the Weather Resistant Barrier (min. 100mm (4")) with ADEX BASECOAT. The mesh will be wrapped to the front face of the EPS insulation board during the wall mesh application. This will create a "stay-in-place" mechanism.
- 3.4.4.2** Required for projects needing to meet CAN/ULC-S101.
- 3.4.5 Backwraps**
- 3.4.5.1** Edges of ADEX EPS INSULATION that meet dissimilar substrates, terminations, wall openings, etc. shall be backwrapped.
- 3.4.6 Insulation Boards**
- 3.4.6.1** Apply ADEX BASECOAT adhesive as vertical ribbons using a 3/8" x 1/2" x 1-1/2" U-notched trowel.
- 3.4.6.2** ADEX EPS-FLAT INSULATION boards shall be placed horizontally on the walls starting with edge wrapped boards at the base of the wall. Apply firm pressure over the entire surface of the board to ensure complete contact of the adhesive to the substrate. Ensure the adhesive does not dry prior to installation of the insulation boards.
- 3.4.6.3** EPS Boards shall be butted tightly together to eliminate any thermal breaks. Care must be taken to prevent adhesive from getting between the joints of the ADEX EPS-FLAT INSULATION boards.
- 3.4.6.4** Gaps between insulation boards shall be packed with slivers of EPS foam or filled with an expanding spray-foam compatible with the insulation board.
- 3.4.6.5** Stagger vertical joints and interlock insulation boards at all inside and outside corners.
- 3.4.6.6** Stagger insulation board and sheathing board joints at least 150mm (6") apart from each other.
- 3.4.6.7** Where the adex-VCA system meets dissimilar substrates and/or terminates (vertically) the ADEX EPS-FLAT INSULATION shall be backwrapped (as per paragraph 3.4.5 of this Section).
- 3.4.6.8** ADEX EPS-FLAT INSULATION boards shall be rasped to achieve a smooth even surface, create better adhesion, and remove possible ultra-violet damage and/or other surface pollutants.
- 3.4.6.9** The entire surface of the ADEX EPS-FLAT INSULATION boards shall be clean prior to the application of the ADEX BASECOAT and reinforcing mesh.
- 3.4.7 Aesthetic Details**
- 3.4.7.1** V-grooves/Reveals shall be installed as per the construction

- documents (after the insulation boards have been rasped). Aesthetic details create visual enhancements, ease finish coat applications, and provide drip edges to soffit areas.
- 3.4.7.2** V-grooves/Reveals shall be completed using a hot-wire knife to ensure tight, crisp lines are maintained. The inset areas shall be finished with mesh and basecoat.
- 3.4.7.3** A minimum thickness of 19mm (3/4") of EPS insulation, between the substrate and base of any reveal, shall be maintained.
- 3.4.7.4** V-grooves/Reveals shall not be in alignment with insulation board joints or with the corners of openings.
- 3.4.8** Batten & Foam Details
- 3.4.8.1** All battens made of expanded polystyrene (EPS) shall be installed by bonding them with ADEX BASECOAT adhesive, or with spray polyurethane such as Wind-lock's Foam-2-Foam, or by mechanically fastening them to the structure.
- 3.4.8.2** Foam battens shall be locked to the ADEX EPS-FLAT INSULATION by embedding the mesh "wings" of the batten into ADEX BASECOAT.
- 3.4.8.3** All batten details extending more than 50mm (2") beyond the basecoat must have an outward-facing slope (minimum of 22° degrees) to prevent moisture from accumulating on them.
- 3.4.8.4** All cornice and parapet details shall be cap-flashed regardless of slope.
- 3.4.9** Basecoat & Reinforcing Mesh
- 3.4.9.1** Apply ADEX BASECOAT over the ADEX EPS-FLAT INSULATION surface to a uniform thickness of approximately 1.6 mm (1/16"). Work horizontally or vertically in strips of 1016mm (40"), and immediately embed Adex STANDARD MESH into the wet basecoat.
- 3.4.9.2** Install an additional 300mm (12") long piece of STARTER/DETAIL MESH (at a 45°-degree angle) at the corners of all wall openings.
- 3.4.9.3** STANDARD MESH shall be double lapped not less than 200mm (8") at all corners and overlapped not less than 63mm (2.5") at mesh joints. Avoid wrinkles from forming in the mesh.
- 3.4.9.4** The final thickness of the basecoat shall be such that the REINFORCING MESH is fully embedded and not visible. Apply additional skim coats as required.
- a) ARMOUR MESH is advised in high traffic areas (Optional).
- b) Install ARMOUR MESH as per locations noted in the construction drawings.
- c) Apply ADEX BASECOAT to the surface of the insulation boards to a thickness of 2.4mm (3/32") and embed ARMOUR MESH (vertical application is preferred). Smooth the surface until the mesh is fully embedded.
- d) ARMOUR MESH shall be abutted and not lapped.
- e) The ARMOUR MESH shall be installed to heights indicated in the plans.
- f) All layers of ARMOUR MESH shall be covered with a layer of STANDARD MESH.
- 3.4.9.5** CORNER MESH is recommended at all major inside/outside corners (Optional). Install CORNER MESH on exposed interior/exterior corners as noted in the construction documents.
- 3.4.9.6** Allow the basecoat to dry before applying the primer and finish coat (24-hours).
- 3.4.10** Primer
- 3.4.10.1** Apply an even coat of Adex PRIMEX PRIMER (tinted to the same colour as the finish coat) with a good-quality paintbrush, 10mm (3/8") nap roller, or sprayer.
- 3.4.10.2** Allow PRIMEX PRIMER to dry before commencing with the Finish Coat.
- 3.4.11** Finish Coat
- 3.4.11.1** Trowel-apply a tight coat of Adex Finish Coat, texture [see www.adex.ca or Adex Specification Binder] to a thickness not greater than the largest aggregate. Apply the finish coat with a stainless steel trowel in a continuous fashion, maintaining a wet edge. Levelling and texturing shall take place in one operation to give the Adex Finish Coat a uniform appearance.
- 3.4.11.2** Avoid applications in direct sunlight.
- 3.4.11.3** Avoid applying finish coat at locations where caulking will be installed.
- 3.4.11.4** Weather conditions will be a factor in the application and drying time of the Finish Coat.
- 3.4.12** Caulking
- 3.4.12.1** Refer to Section 07 90 00, Sealant.

3.4.12.2 Caulking shall be installed in a timely manner. Protect open joints from water intrusion during the construction period with backer rod until permanently sealed.

3.5 PROTECTION

3.5.1 Ensure that the general contractor protects all work against moisture infiltration and other damages by installing the necessary flashing and caulking in a timely manner.

3.5.2 Provide protection against dirt, moisture, high humidity, and freezing temperatures until materials are fully dry.

3.6 CLEAN UP

3.6.1 After completion, remove waste and leftover materials (used in this Section) from the job site.

3.6.2 Clean all adjacent materials and surfaces, and repair any defects to this application or any defects to any other work caused by this application, all to the approval of the consultant.

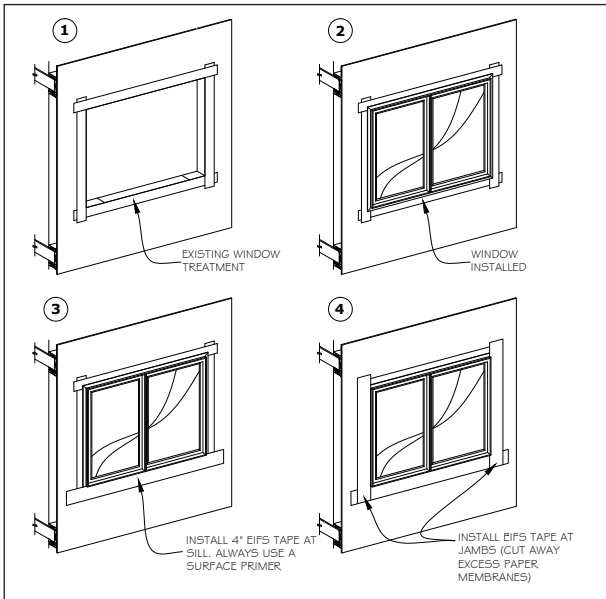
ALL REQUESTS FOR APPLICATION PROCEDURAL CHANGES MUST BE AUTHORIZED IN WRITING BY ADEX SYSTEMS INC.

CORPORATE SALES CENTER

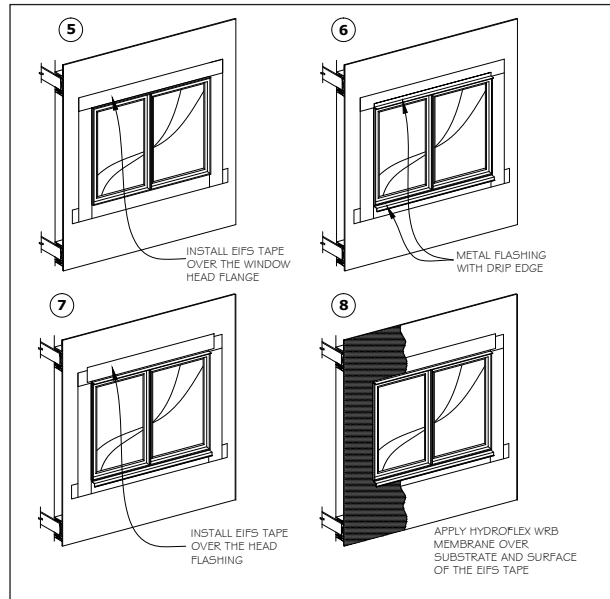
7911, Marco Polo
Montreal (Quebec) Canada H1E 1N8
www.adex.ca
P 514-648-1213 | F 514-648-9597

October 2016

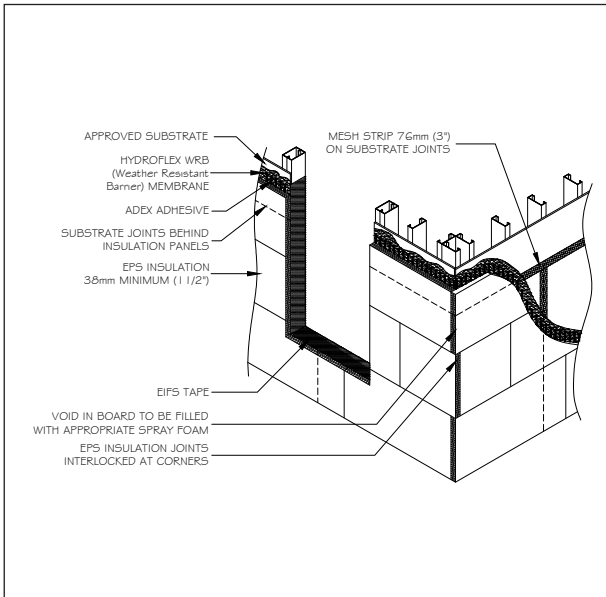
Information in this document contains the current recommendations for the installation of the adex-VCA system. It is only provided as a guide and is subject to modifications at any time without notice. ADEX Systems Inc. reserves the right to make any modification according to technological progress. Specialised designers, architects, engineers or other professionals that choose to make any use of this information bear the complete responsibility, whatever it be, direct or indirect, that could follow from such use. ADEX Systems Inc. does not bear any responsibility that could give way to damages, defaults, defects, deficiencies, prejudices, loss or decrease of profit, be they direct or indirect, resulting from such use of this information by specialised designers, architects, engineers or other professionals. Please refer to www.adex.ca for the latest version of this document.



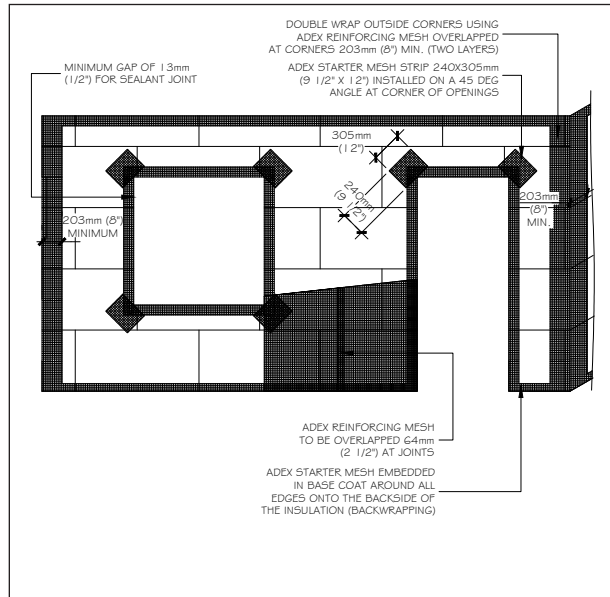
WINDOW TREATMENT - PART 1



WINDOW TREATMENT - PART 2

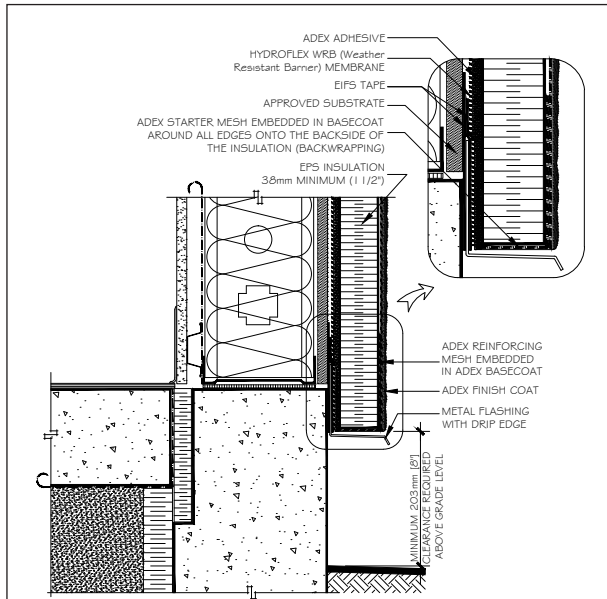


INSULATION INSTALLATION - METHOD 1

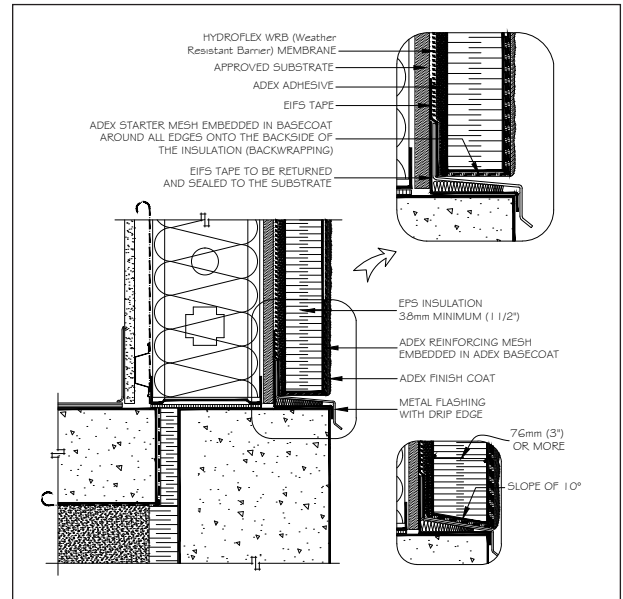


REINFORCING MESH INSTALLATION

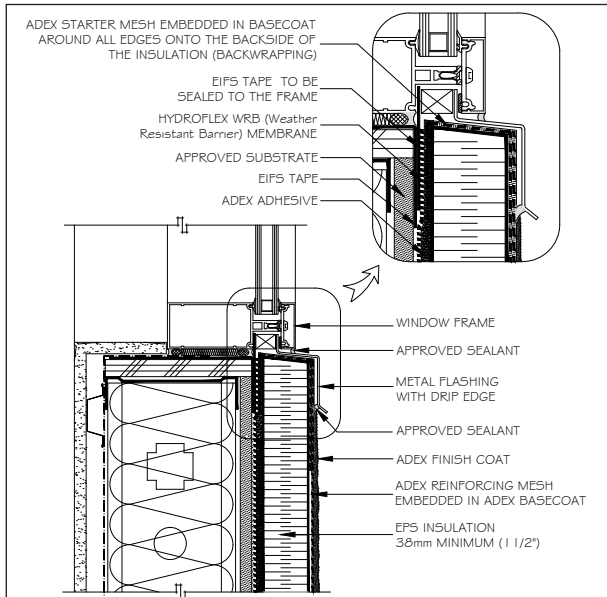
Information in this document contains the current recommendations for the installation of the adex-VCA system. It is only provided as a guide and is subject to modifications at any time without notice. ADEX Systems Inc. reserves the right to make any modification according to technological progress. Specialised designers, architects, engineers or other professionals that choose to make any use of this information bear the complete responsibility, whatever it be, direct or indirect, that could follow from such use. ADEX Systems Inc. does not bear any responsibility that could give way to damages, defaults, defects, deficiencies, prejudices, loss or decrease of profit, be they direct or indirect, resulting from such use of this information by specialised designers, architects, engineers or other professionals. Please refer to www.adex.ca for the latest version of this document.



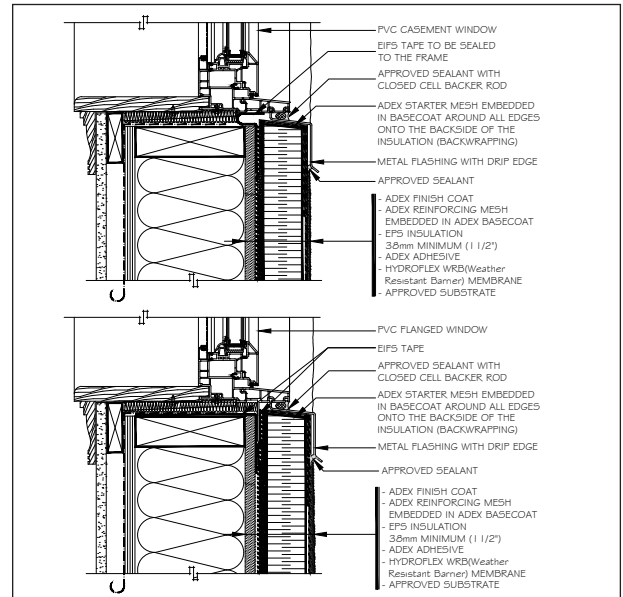
TERMINATION AT GRADE - METHOD A



TERMINATION AT GRADE - METHOD B

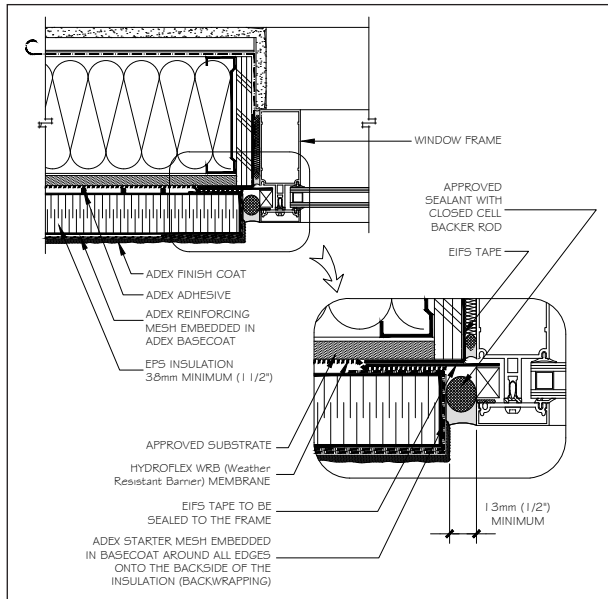


WINDOW SILL (ALUMINUM WINDOW)

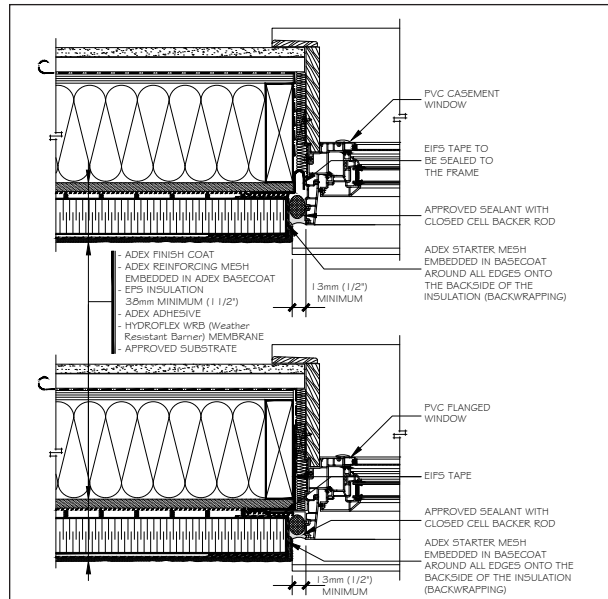


WINDOW SILL (PVC WINDOW)

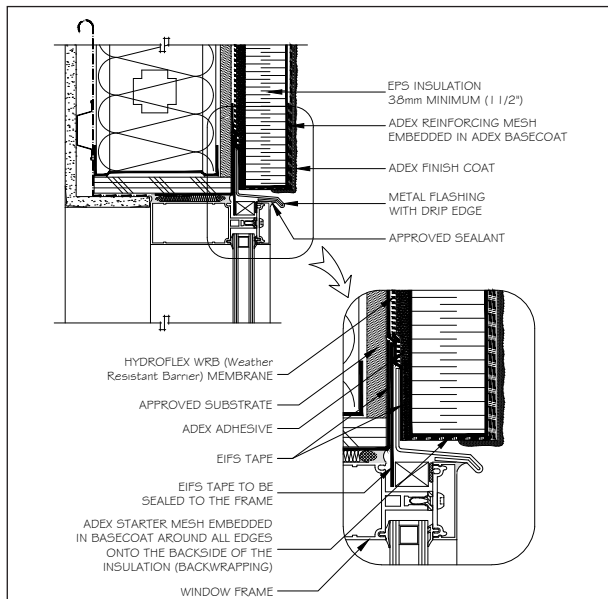
Information in this document contains the current recommendations for the installation of the adex-VCA system. It is only provided as a guide and is subject to modifications at any time without notice. ADEX Systems Inc. reserves the right to make any modification according to technological progress. Specialised designers, architects, engineers or other professionals that choose to make any use of this information bear the complete responsibility, whatever it be, direct or indirect, that could follow from such use. ADEX Systems Inc. does not bear any responsibility that could give way to damages, defaults, defects, deficiencies, prejudices, loss or decrease of profit, be they direct or indirect, resulting from such use of this information by specialised designers, architects, engineers or other professionals. Please refer to www.adex.ca for the latest version of this document.



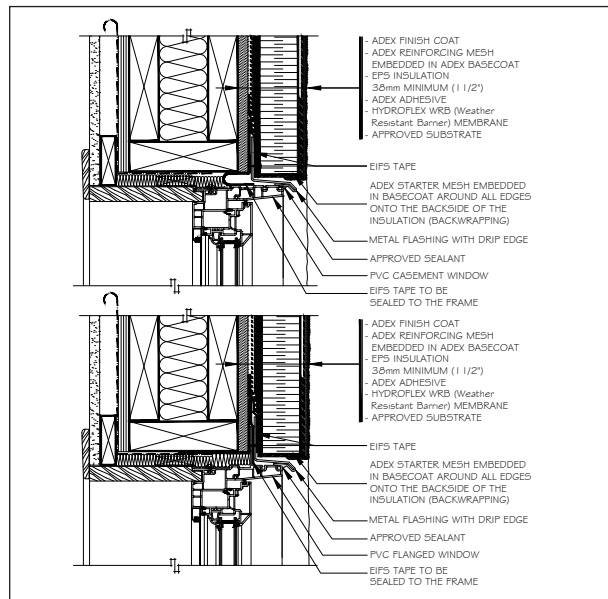
WINDOW JAMB (ALUMINUM WINDOW)



WINDOW JAMB (PVC WINDOW)

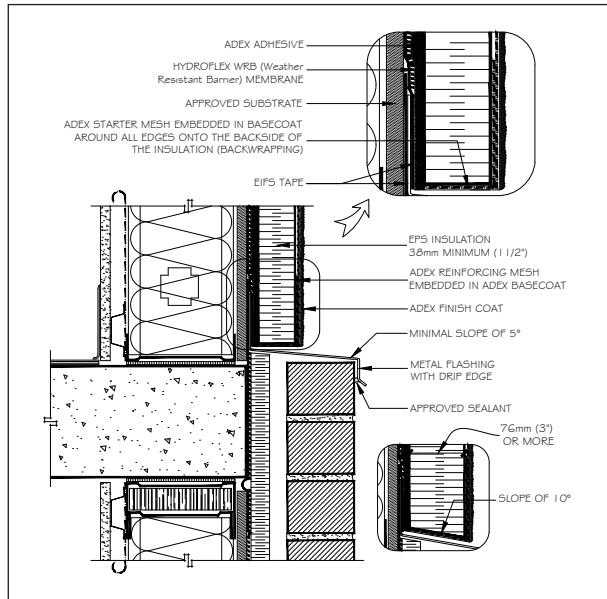


WINDOW HEAD (ALUMINUM WINDOW)

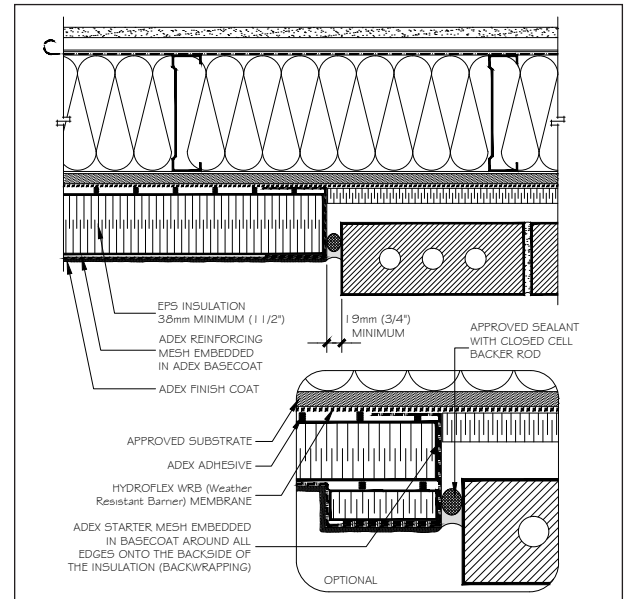


WINDOW HEAD (PVC WINDOW)

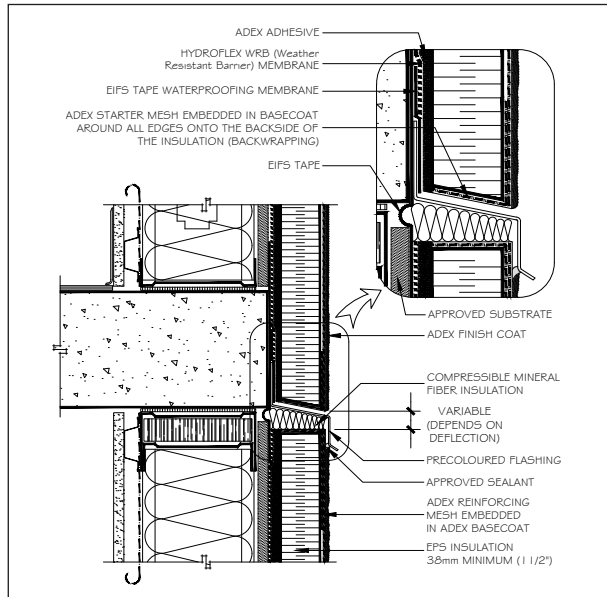
Information in this document contains the current recommendations for the installation of the adex-VCA system. It is only provided as a guide and is subject to modifications at any time without notice. ADEX Systems Inc. reserves the right to make any modification according to technological progress. Specialised designers, architects, engineers or other professionals that choose to make any use of this information bear the complete responsibility, whatever it be, direct or indirect, that could follow from such use. ADEX Systems Inc. does not bear any responsibility that could give way to damages, defaults, defects, deficiencies, prejudices, loss or decrease of profit, be they direct or indirect, resulting from such use of this information by specialised designers, architects, engineers or other professionals. Please refer to www.adex.ca for the latest version of this document.



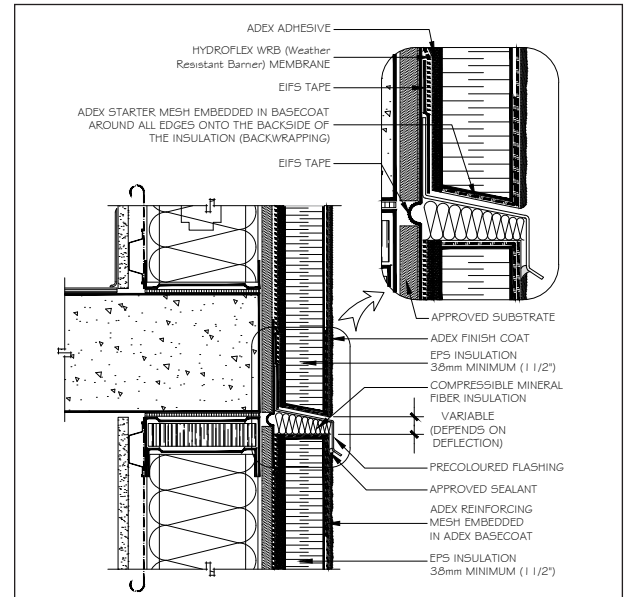
HORIZONTAL JUNCTION



VERTICAL JUNCTION

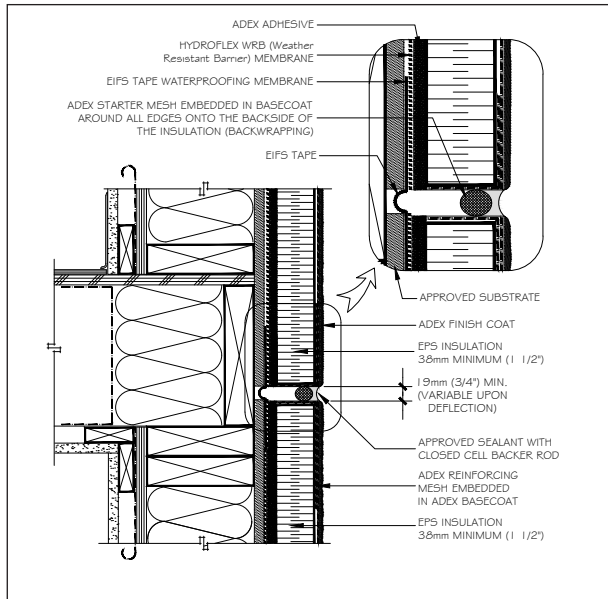


HORIZONTAL CONTROL JOINT - METHOD A

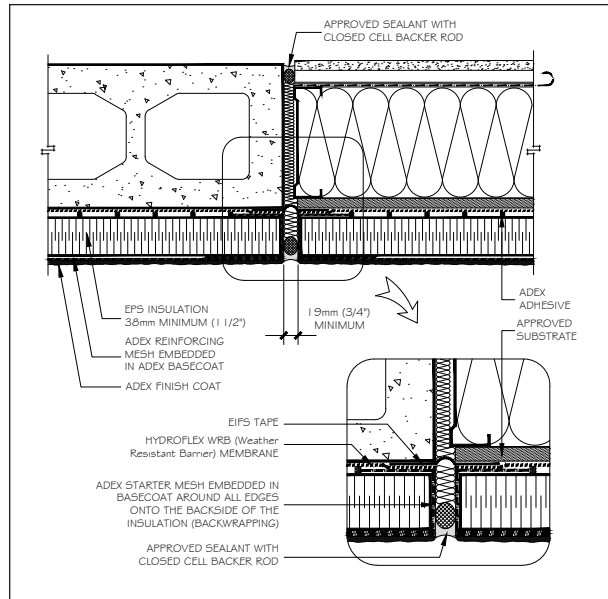


HORIZONTAL CONTROL JOINT - METHOD B

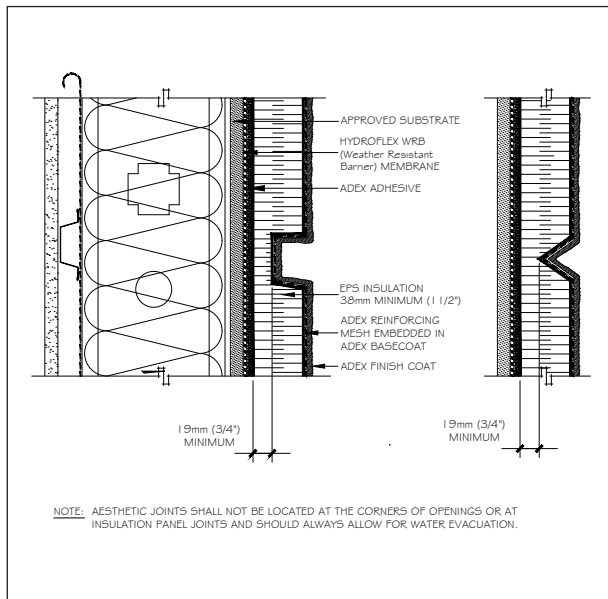
Information in this document contains the current recommendations for the installation of the adex-VCA system. It is only provided as a guide and is subject to modifications at any time without notice. ADEX Systems Inc. reserves the right to make any modification according to technological progress. Specialised designers, architects, engineers or other professionals that choose to make any use of this information bear the complete responsibility, whatever it be, direct or indirect, that could follow from such use. ADEX Systems Inc. does not bear any responsibility that could give way to damages, defaults, defects, deficiencies, prejudices, loss or decrease of profit, be they direct or indirect, resulting from such use of this information by specialised designers, architects, engineers or other professionals. Please refer to www.adex.ca for the latest version of this document.



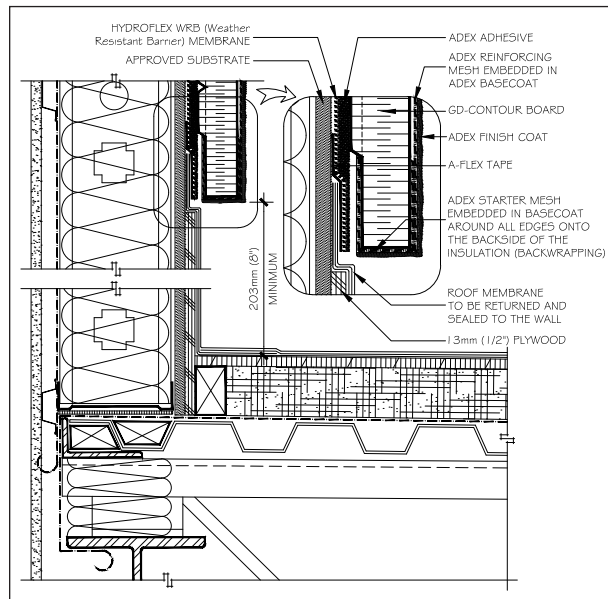
HORIZONTAL CONTROL JOINT - METHOD C



VERTICAL EXPANSION JOINT

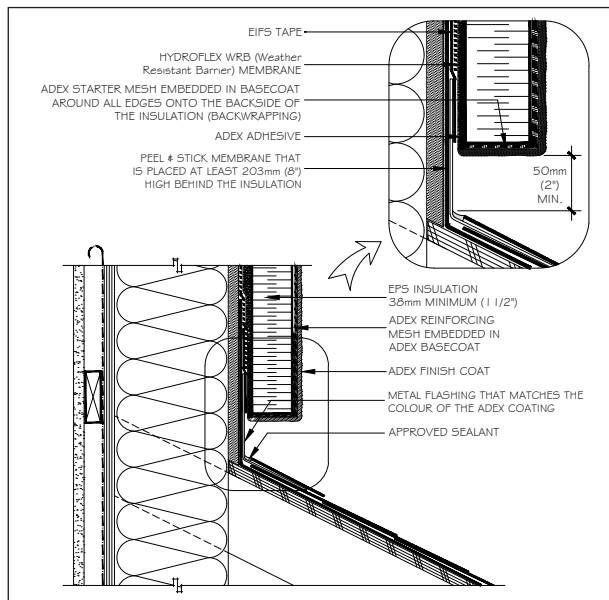


AESTHETIC JOINT

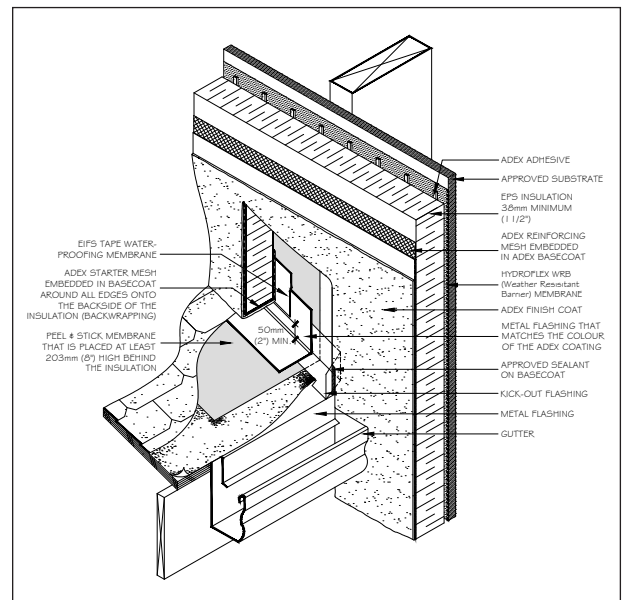


WALL/ROOF JUNCTION - FLAT ROOF

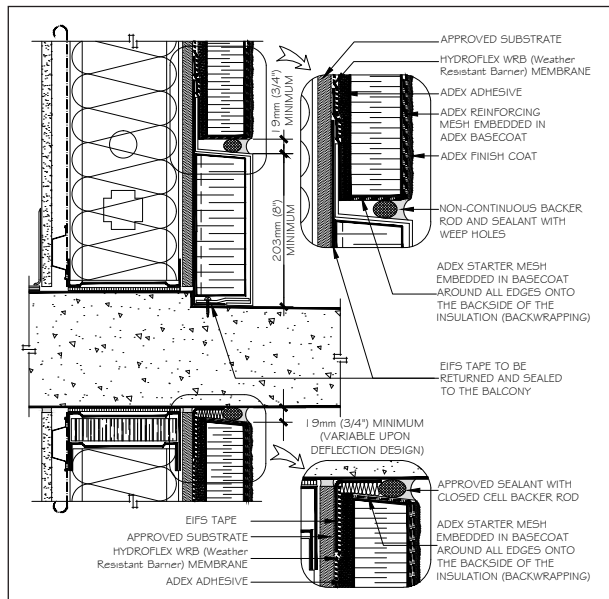
Information in this document contains the current recommendations for the installation of the adex-VCA system. It is only provided as a guide and is subject to modifications at any time without notice. ADEX Systems Inc. reserves the right to make any modification according to technological progress. Specialised designers, architects, engineers or other professionals that choose to make any use of this information bear the complete responsibility, whatever it be, direct or indirect, that could follow from such use. ADEX Systems Inc. does not bear any responsibility that could give way to damages, defaults, defects, deficiencies, prejudices, loss or decrease of profit, be they direct or indirect, resulting from such use of this information by specialised designers, architects, engineers or other professionals. Please refer to www.adex.ca for the latest version of this document.



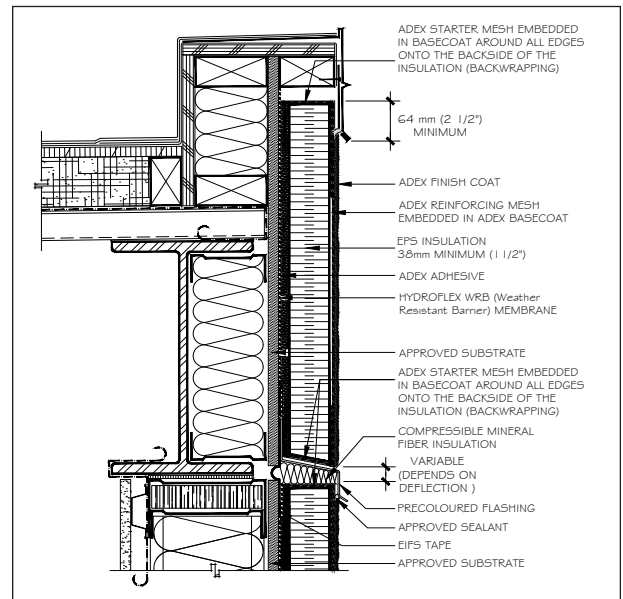
WALL/ROOF JUNCTION - SLOPED ROOF



WALL/ROOF JUNCTION - ISOMETRY

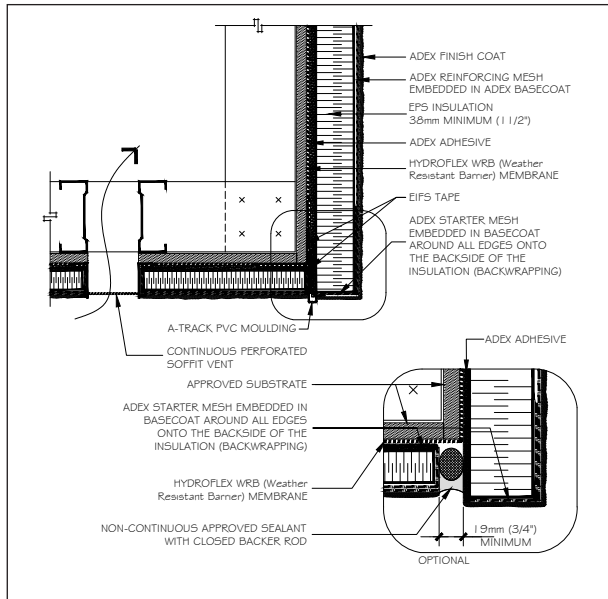


BALCONY JUNCTION

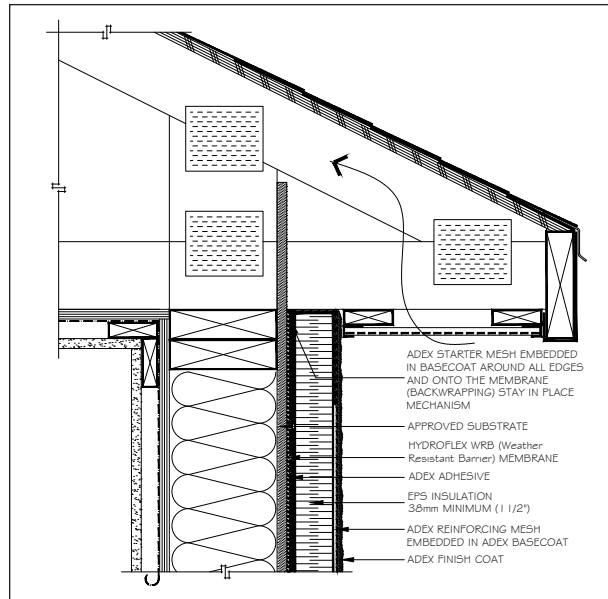


PARAPET

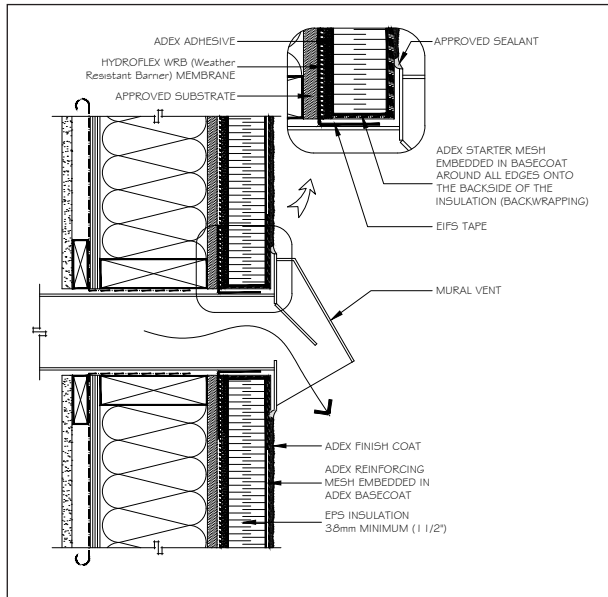
Information in this document contains the current recommendations for the installation of the adex-VCA system. It is only provided as a guide and is subject to modifications at any time without notice. ADEX Systems Inc. reserves the right to make any modification according to technological progress. Specialised designers, architects, engineers or other professionals that choose to make any use of this information bear the complete responsibility, whatever it be, direct or indirect, that could follow from such use. ADEX Systems Inc. does not bear any responsibility that could give way to damages, defaults, defects, deficiencies, prejudices, loss or decrease of profit, be they direct or indirect, resulting from such use of this information by specialised designers, architects, engineers or other professionals. Please refer to www.adex.ca for the latest version of this document.



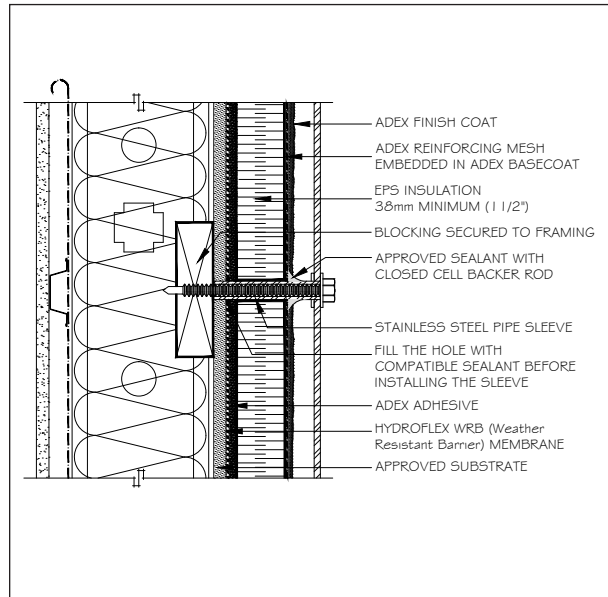
SOFFIT



EAVE SOFFIT JUNCTION - SLOPED ROOF

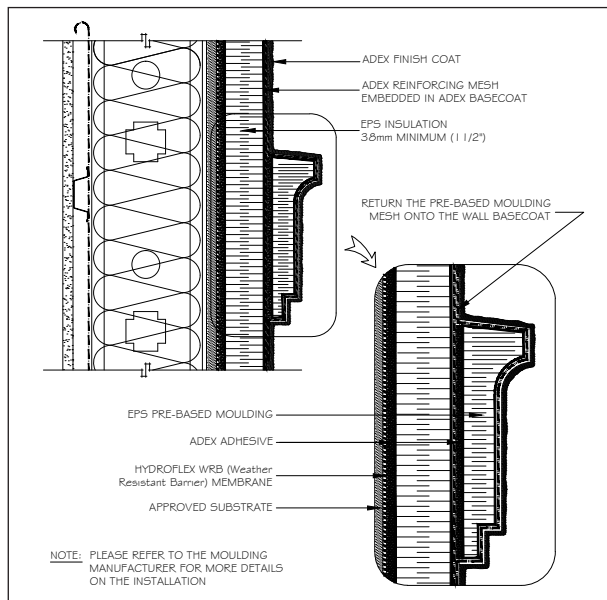


WALL PENETRATIONS

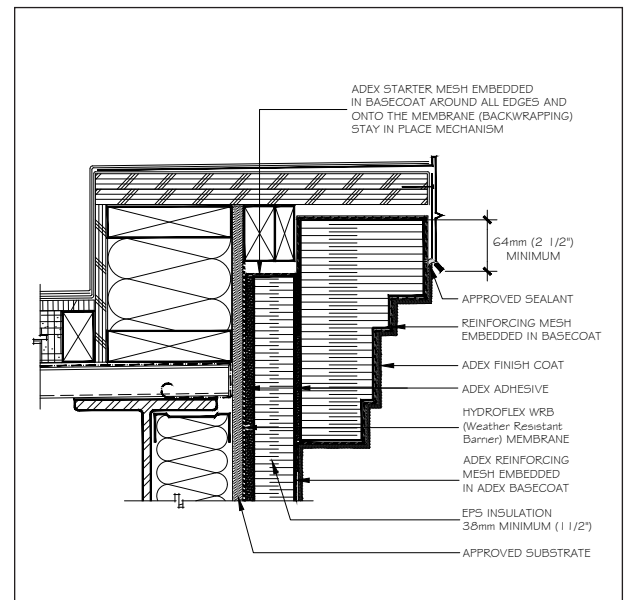


ACCESSORIES ATTACHMENT

Information in this document contains the current recommendations for the installation of the adex-VCA system. It is only provided as a guide and is subject to modifications at any time without notice. ADEX Systems Inc. reserves the right to make any modification according to technological progress. Specialised designers, architects, engineers or other professionals that choose to make any use of this information bear the complete responsibility, whatever it be, direct or indirect, that could follow from such use. ADEX Systems Inc. does not bear any responsibility that could give way to damages, defaults, defects, deficiencies, prejudices, loss or decrease of profit, be they direct or indirect, resulting from such use of this information by specialised designers, architects, engineers or other professionals. Please refer to www.adex.ca for the latest version of this document.



DECORATIVE MOULDING



PARAPET MOULDING

Information in this document contains the current recommendations for the installation of the adex-VCA system. It is only provided as a guide and is subject to modifications at any time without notice. ADEX Systems Inc. reserves the right to make any modification according to technological progress. Specialised designers, architects, engineers or other professionals that choose to make any use of this information bear the complete responsibility, whatever it be, direct or indirect, that could follow from such use. ADEX Systems Inc. does not bear any responsibility that could give way to damages, defaults, defects, deficiencies, prejudices, loss or decrease of profit, be they direct or indirect, resulting from such use of this information by specialised designers, architects, engineers or other professionals. Please refer to www.adex.ca for the latest version of this document.