

DESIGNING A STENCILEX TEMPLATE

This document contains information made available to specialised designers, architects, engineers or other professionals, as a guide only, to assist them create and design a STENCILEX template. Specialised designers, architects, engineers or other professionals bear the complete responsibility of evaluating usability, conformity and relevance of the information in view of the particular project and they commit to verify all technical data in their template design in order to assess their suitability in the project. When such use is done by specialised designers, architects, engineers or other professionals, they take full responsibility for the information as if it were their own. Use by a non-specialised person is strongly advised against.

Design instructions for STENCILEX on vertical walls

1.1 Find your Inspiration:

Adex Systems has a collection of STENCILEX designs already created from which to draw inspiration. However, we strongly encourage users to create their own unique templates specific to their own building project. Adex STENCILEX allows the freedom to create striking visual elements, designed for use with any Adex EIFS (Exterior Insulation Finish System) installation or approved vertical wall elevation.

1.2 Select a software program to design your STENCILEX template:

All STENCILEX designs should be created using vector-based graphics in order to manufacture the templates.

Some popular examples of vector-based software include:

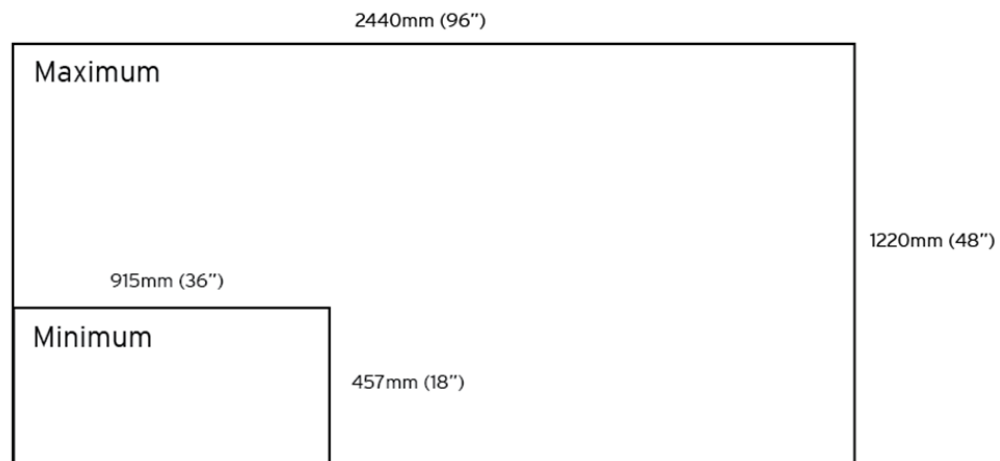
- CAD (computer-aided design) programs;
- Adobe Illustrator, etc.

1.3 Determine an appropriate STENCILEX template size.

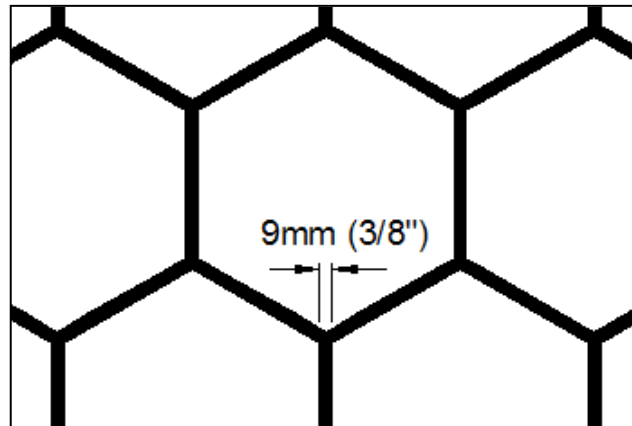
Knowing the elevations that will receive the STENCILEX application will allow you to create a grid pattern for the repeating pattern of your design.

1.3.1 The constraints for a STENCILEX template are as follows:

- 1.3.1.1 **Maximum.** The maximum STENCILEX template size is 1220mm (high) x 2440mm (wide) [48" x 96"]. The height should be no more than 1220mm (48") high to allow proper installation of the templates and the Adex Finish Coat.
- 1.3.1.2 **Minimum.** The minimum STENCILEX template size should be 457mm (wide) x 915mm (high) [18" x 36"].



1.3.1.3 Minimum gaps. Except where designs come to a point, the recommended minimum 'line' thickness should be 9mm (3/8").



1.4 Configure your template size.

1.4.1 Open your software and draw your template size. This will be your drawing area. Everything drawn in this template will need to repeat as a pattern. This means that, when installing multiple STENCILEX templates in continuation, the pattern will be seamless.

1.4.2 Consider your template size as being fluid. It will always change based on the design and scale of the pattern that you create. Due to the repeating nature of STENCILEX templates, not all designs will fit into the same drawing space.

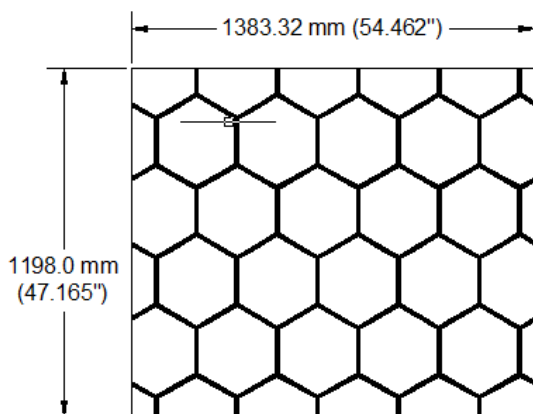
1.5 Drawing a STENCILEX pattern.

There are some important guidelines when drawing a pattern for STENCILEX. The use of these guidelines are visible in the collection of STENCILEX templates found on the Adex.ca website.

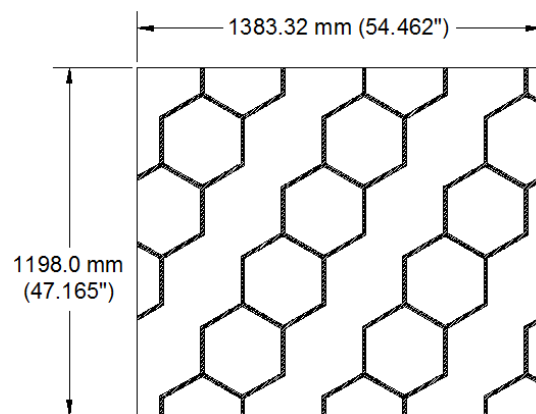
1.5.1 Guidelines for STENCILEX patterns:

a. Lines must touch.

In order to install each STENCILEX template on the wall in ONE piece, all lines must touch each other. Floating shapes and design lines that do not connect to other design elements are not possible.



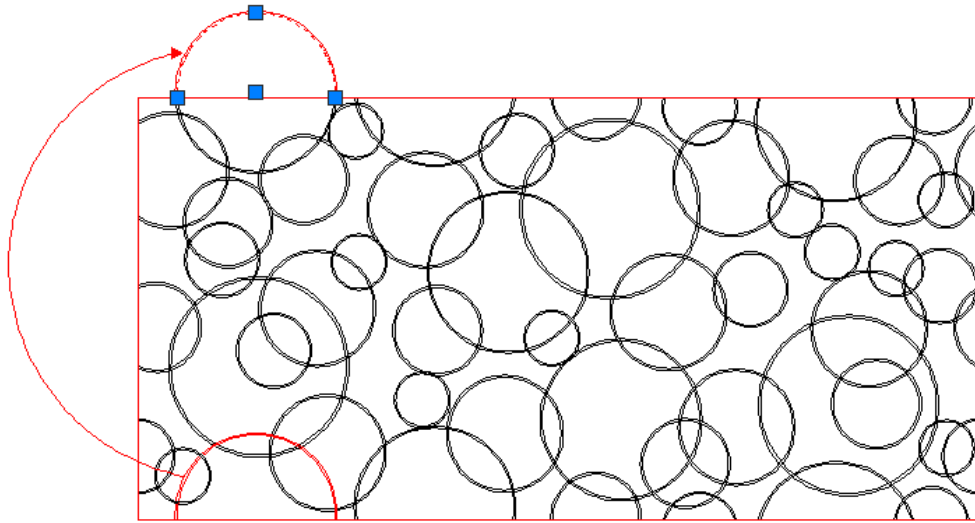
All lines connect. Good!




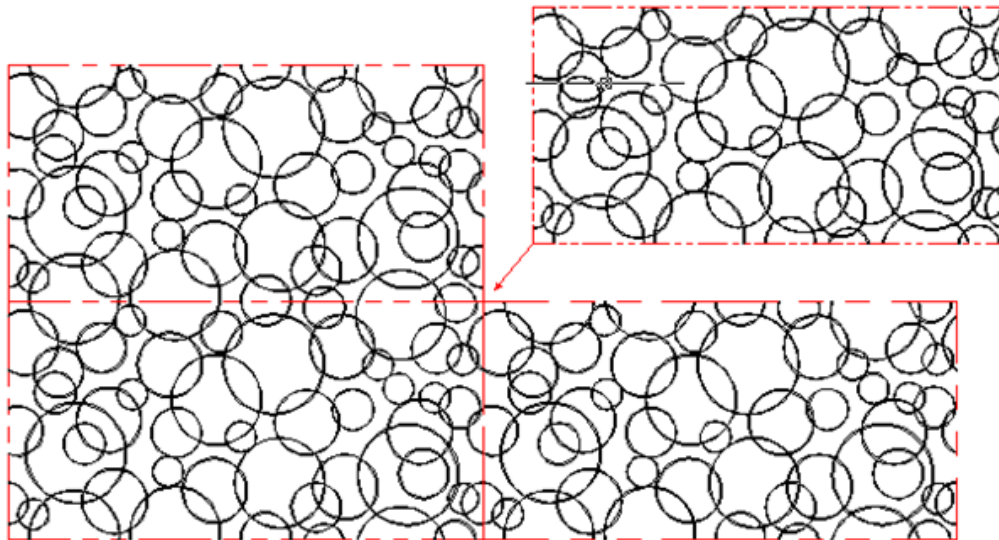
Design lines do not all connect.

b. Patterns must repeat.

Shapes that extend beyond the drawing area must appear on the opposite side of the template. This must occur both vertically and horizontally. Certain design software may make this process easier than other programs. See the below images for a graphical explanation.



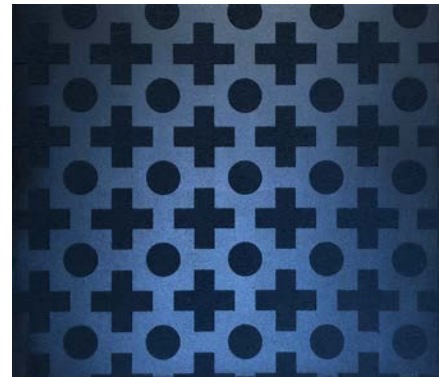
Pattern repeats vertically and horizontally. Good! 



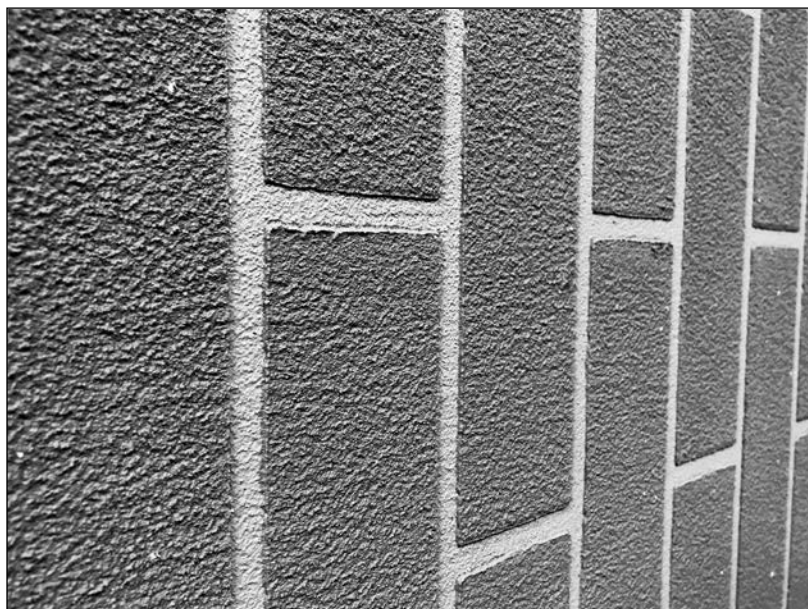
 Viewing the templates in a repeating pattern. Everything properly connects!

c. Templates leave a recessed impression.

After removing the STENCILEX template from the wall, the design it leaves behind will be a 'negative' recessed impression. The base colour will be visible, revealing the subtle design or contrasting effect you have created. A subtle design can be created with a matching base and top layer. A contrasting or dramatic effect can be created using contrasting colours/textures; such as using a combination of ADEX CRYSTAL (metallic) base colour and ADEX PLASTENE (mosaic).



When drawing the “negative” portion of the STENCILEX template, remember that this area will display the base colour. In your software, fill the design with a solid colour in order to differentiate this space and make it visible.





1.6 Test your STENCILEX template:

Import your design into your CAD drawing or create a skin of the pattern in programs such as SketchUp. This will allow you to determine if you have the proper scale and repeating pattern for your project.

1.7 Submitting your pattern:

Once you are happy with, and have completed your pattern, please send your STENCILEX design to STENCILEX@ADEX.CA. We will register your pattern in our database and provide you a STENCILEX Serial Number. Reference this STENCILEX Serial Number on all Architectural Drawings where it will be installed. The Contractor installing STENCILEX will order the templates using this Serial Number information.

It's that easy!

We're here to help! If you need assistance with designing with STENCILEX, please contact our offices at 1-866-900-ADEX (1-866-900-2339).

Information in this document contains the current recommendations for the designing a STENCILEX template. It is only provided as a guide and is subject to modifications at any time without notice. ADEX Systems Inc. reserves the right to make any modification according to technological progress. Specialised designers, architects, engineers or other professionals that choose to make any use of this information bear the complete responsibility, whatever it be, direct or indirect, that could follow from such use. ADEX Systems Inc. does not bear any responsibility that could give way to damages, defaults, defects, deficiencies, prejudices, loss or decrease of profit, be they direct or indirect, resulting from such use of this information by specialised designers, architects, engineers or other professional.

SYSTÈMESadex adexSYSTEMS

CENTRE DES AFFAIRES
CORPORATE SALES CENTER
7911, Marco Polo
Montréal (Québec) Canada H1E 1N8
www.adex.ca
T 514-648-1213 | F 514-648-9597

ENDUITS architecturaux architectural COATINGS

September 2018