



# ADHESIVE MORTAR

architectural COATINGS



AM01 | ARCTIC



AM02 | SANDSTONE



AM03 | CLAY



AM04 | ASH



AM05 | FLINT



AM06 | GRAPHITE



AM07 | ANTHRACITE



AM08 | IVORY



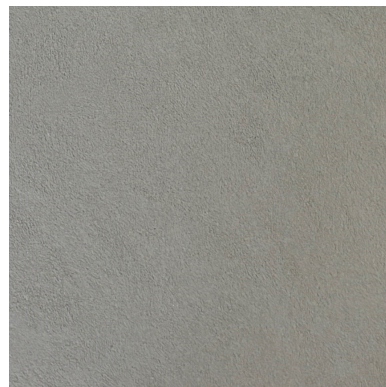
AM09 | TAUPE



AM10 | GREIGE



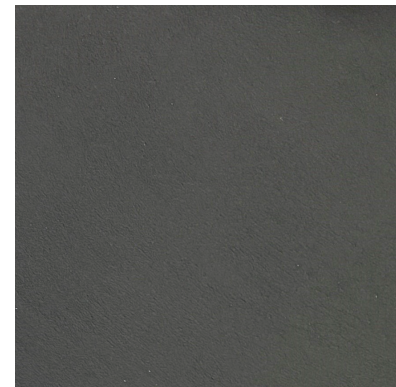
AM11 | MIST



AM12 | STONE



AM13 | SLATE



AM14 | ONYX

NOTE: Colours shown as reference only. On screen and printed renderings may vary from one visual device to another.